

JCS-HR5U

FULL HD, ULTRA-COMPACT
DUAL-OUTPUT VIDEO CAMERA
HDMI® & USB 3.0



(Lens not included)

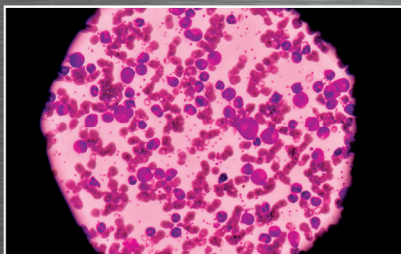
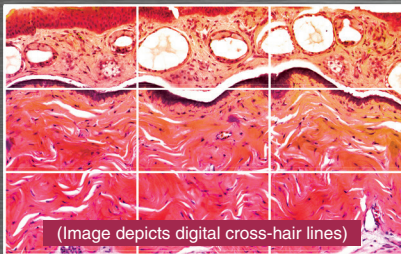
HDMI®

Features

- HDMI 1080p / 1080i output at 59.94Hz
- USB 3.0 1080p output at 59.94 fps maximum
- Simultaneous live view and USB output
- F10 sensitivity rivals three-chip camera performance
- 1/2.8" progressive-scan color CMOS sensor
- 12-color channel matrix adjustment
- Gamma correction
- Ultra-compact (approx 1.75" x 1.75" x 3") one-piece system
- 5 User-programmable settings files
- Integrates with PC for image capture and streaming (not provided)
- C-mount lens mount
- Digital crosshair lines

Applications

- Microscopy
- Bio imaging
- Scientific imaging
- Live tissue imaging



Real-Time 60 fps Full HD USB 3.0 Video Camera

The new JCS-HR5U camera represents an important advancement in clinical microscopy imaging applications. The ultra-compact, full HD video camera features both HDMI and SuperSpeed USB image outputs for *simultaneous*, real-time live viewing from a monitor plus high-res image capture to a computer. It is optimal for color documentation systems integration in the fields of bio imaging, scientific imaging, and live tissue imaging.

TOSHIBA

JCS-HR5U

FULL HD, ULTRA-COMPACT
DUAL-OUTPUT VIDEO CAMERA HDMI & USB 3.0

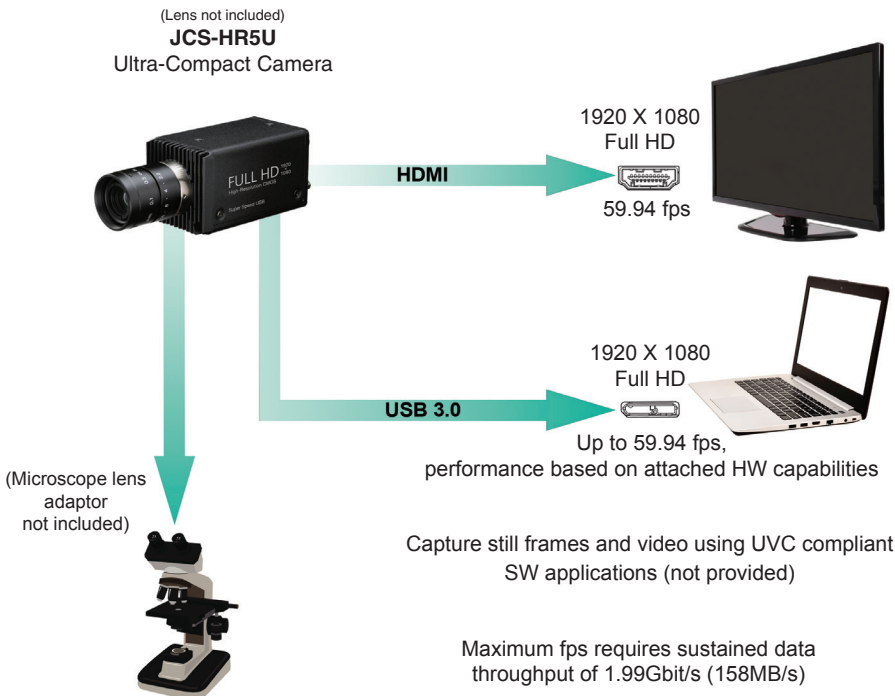
PERFORMANCE SPECIFICATIONS

Image sensor	1/2.8 inch color CMOS sensor (progressive scan, rolling shutter)
Lens mount	C mount
Image output	HDMI 1.4a 4:4:4 : 1920 x 1080 / 59.94Hz USB 3.0 (UVC1.1 compliant YUV4:2:2 : USB 3.1 Gen 1) 1920 x 1080 / 59.94fps (USB 3.0 mode theoretical maximum) 1920 x 1080 / 10fps (USB 2.0 mode theoretical maximum)
Sensitivity	F10 standard (2000lx, 3100K, gain OFF, gamma OFF, 59.94Hz); F11 standard (2000lx, 3100K, gain OFF, gamma OFF, 50Hz)
Minimum illumination	4lx standard (F1.4, 3100K, gain +20dB, gamma OFF, 59.94Hz) 3.3lx standard (F1.4, 3100K, gain +20dB, gamma OFF, 50Hz)
Power requirements	DC12V± 10%, power consumption approx. 4.5W
Environmental	0°C ~ + 40°C (32°F ~ +104°F) operating -20°C ~ + 60°C (-4°F ~ +140°F) non-operating Humidity 90% or less non-condensing
Gain	AUTO / MANUAL : 0 ~ 20dB / OFF
White balance	AWB (Automatic White Balance) / MANUAL
Shutter	AUTO / MANUAL (OFF ~ 1/10000s)
Image optimization function	MATRIX color correction (12 colors), gamma correction, detail gain, master pedestal chroma gain setting, knee correction
Special function	Flip / mirror, digital crosshair lines

This Class A digital apparatus complies with Canadian ICES-003.

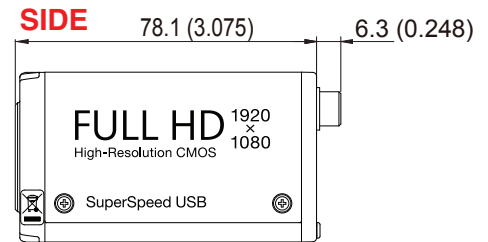
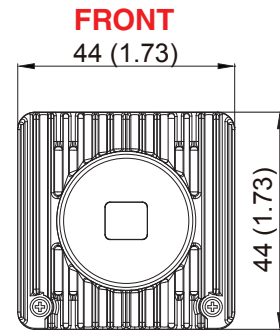
Manufactured by Canon Medical Systems Corporation
Video Sensing Division, Tokyo, Japan

CONNECTIONS

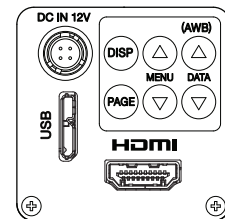


DIMENSIONS

Measurements in Millimeters (Inches)



REAR



Output & connector format; HDMI 1.4a Type A terminal, UVC 1.1 Micro-B connector, USB 3.1, Gen 1

Weight approx. 170 g (0.375 lbs)

© 2018 Toshiba America Information Systems, Inc. All rights reserved. All products and names mentioned are the property of their respective owners. While Toshiba has made every effort at the time of publication to ensure the accuracy of the information provided herein, product specifications, configurations, prices, system/component/options availability are all subject to change without notice.

REFER TO OUR WEBSITE FOR THE LATEST UPDATES.

TOSHIBA

Exclusive distributor:
Toshiba America Information Systems, Inc.
Imaging Systems Division
5241 California Ave., Suite 100 Irvine, CA 92617
www.toshibacameras.com