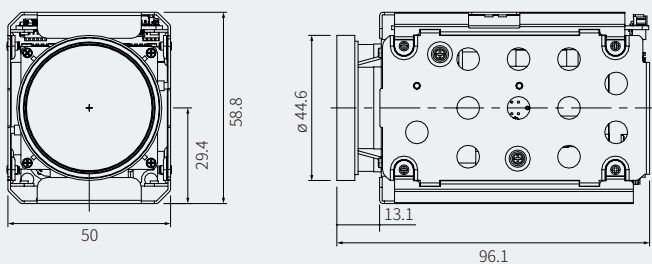


Zoom Camera

ATC-HZ5530Z-LP

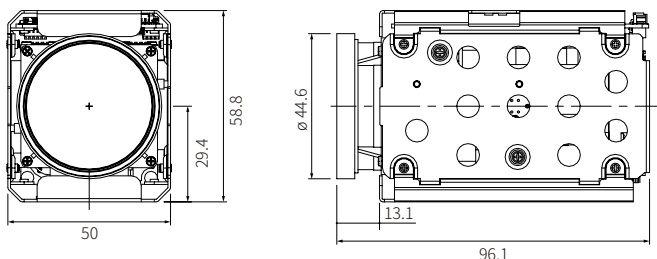
- 1/2.9" Progressive Scan Global Shutter CMOS
- 360x AF Zoom(30x optical zoom, 12x digital zoom)
- 1080p 60/50/30/25 fps
- Mechanical Day&Night
- True WDR
- 3D DNR, Defog
- UART RS232-TTL(Pleco-D, Pelco C, VISCA, Hitachi)



Zoom Camera

ATC-HZ5530Z-LP

Dimensions



Specifications

Image Sensor	1/2.9" Progressive Scan Global Shutter CMOS	
Effective Pixels	1.58MP 1456(H) x 1088(V)	
Video Output mode	LVDS / Parallel / CVBS	
Max. Video Resolution	LVDS / Parallel: 1080p@60(50fps)	
Synchronization system	Internal / External Option	
Min.Illumination	Day mode: 0.1(Lux(F1.6)) Night mode: 0.08Lux(F1.6/ IR-cut filter on) DSS OFF, AGC45dB	
S/N Rate	More than 55dB(AGC off, DSS off)	
Lens	Type	AF Optical zoom lens(DC Iris), IR Corrective
	Focal Length	f=5.0~150mm
	F-value	F1.6(W)~4.3(T)
	Angle of View	Horizontal 59.2°(W)~2.0°(T), Vertical 33.8°(W)~1.15°(T)
Zoom ratio	Optical 30x / Digital 12x	
Focus Min.Working Distance	0.1m(Wide)/1.5m(Tele)~∞	
Focus Control	Auto/Interval/One Push/Manual/Presets	
AE mode	Auto/Shutter Priority/Iris Priority/AGC Priority/Manual	
Brightness	0~14	
Manual Shutter	1/1, 1/2, 1/4(3), 1/8(6), 1/15(12), 1/30(25), 1/60(50)~1/10000	
Manual Iris	F1.6~F32, Close	
Sense-up	Off~32fields	
ETC	Spot AE, Slow AE	
D&N Mode	Auto/Day(Color)/Night(BW)/External-H or L	
White Balance	AUTO/One Push/Indoor/Outdoor/ATW/Manual	
Image Freeze	Off/On	
Image Flip	Off/Horizontal/Vertical/H+V(180° Flip)	
Privacy Mask Zone	8 Zones/14 mask color selectable	
Digital Image Stabilization	Yes	
Motion Detection	4 Zones	

D-WDR	Off/Low/Middle/High	
WDR	Off/On, Adjustable(Level:0~29, Contrast:0~5, Bright:0~19)	
BLC	Off/On, Area selectable	
HLC	Off/On, Area selectable	
AGC	Max.48dB, d2x ~ d9x	
Sharpness	Adjustable(0~15)	
3D-DNR	Off/Auto/Low/Middle/High	
2D-DNR	Off/Auto/Low/Middle/High	
Defog	Off/On/Auto	
Presets Position	256 position Presets(Zoom,Focus), 16Memory Presets, Custom Preset	
Language	English	
UART	Remote	RS232 TTL +5.0V(+3.3V compatible)
	Protocol	VISCA/Pelco-D/Pelco-P/Hitachi: Automatic detection
	Baud rate	2400/4800/9600/19200/38400/57600/115200bps
UTC	-	
Supply Voltage	12VDC(9V to 15VDC)	
Power Consumption	Max.6.4W / Non-working zoom&focus 4.7W	
Dimension(mm)	50x58.8x96.1mm	
Weight	Approx.240g	
Operating Temperature	-10°C~+50°C, Humidity(20~80%)	
Storage Temperature	-20°C~+60°C, Humidity(20~95%)	