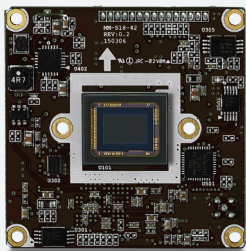


MM-S19Q-42

QHD, 4MP High Resolution
42mm x 42mm, 1Board

EX-SDI **CVBS**



Features

- 1/1.8" 6MP Sony STARVIS CMOS sensor
- 1440p 30fps, 1080p 30fps, 720p 30fps
- Real-time WDR
- Digital Noise Reduction(2D+3D)
- Privacy Mask Function
- Digital Image Stabilization
- High Light Compensation
- Intelligent Motion Detection
- Defog Function
- Supports Pelco-P / Pelco-D / VISCA / Update
- Video Out : EX-SDI 1.0, EX-SDI 2.0, EX-SDI 2.1, CVBS
- Dimension : 42mm X 42mm X 1.2mm

Specifications

MODEL	MM-S19Q-42
Image Sensor	1/1.8" Sony STARVIS CMOS Sensor
Total Pixels	3,096(H) x 2,094(V) = 6.48M Pixels
Active Pixels	3,089(H) x 1,744(V) = 5.39M Pixels
Scanning System	Progressive Sacn
Resolution	Digital : 1440p30(25)/fps, 1080p30(25)/fps, 720p30(25)/fps Analog : 700TVL
Min. Illumination	Color(1/30s) : 0.2 lux, BW(1/30s) : 0.05 lux Color DSS(1/1s) : 0.02 lux, BW(1/1s) : 0.005 lux
Video Output	HD : EX-SDI 1.0, EX-SDI 2.0, EX-SDI 2.1 Analog SD : CVBS
Lens	Option
Brightness	0 ~ 20 steps
Shutter Speed	1/30(25) ~ 1/30,000 sec
DSS	Off / 2x / 4x / 8x / 16x / 32x
AGC	0 ~ 10 steps
WDR/BLC	Off / WDR / BLC
Day&Night	Auto / Day / Night / Ext-in
White Balance	Auto / One Push / Manual / Indoor / Outdoor / Auto-Ext
HLC	Off / On / Night only
DNR	Off / Low / Middle / High / Auto
Mirror	Off / H / V / H&V
Sharpness	0 ~ 10 steps
ACE	Off / Low / Middle / High
Defog	Off / On (Auto / Manual)
Freeze	Off / On
Digital Zoom	2x ~ 32x
Privacy Mask	Max. 24 Areas
Motion Detection	Max. 3 Areas
Defect Detection	Off / On
System	NTSC / PAL
Communication	ID : 1 ~ 255 Baud Rate : 2400 / 4800 / 9600 / 19200 / 38400 / 57600 / 115200 Protocol : Pelco-P / Pelco-D / VISCA / Update
Language	English / Simplified Chinese / Traditional Chinese / Japanese
Power Source	DC12V±10%
Power Consumption	280mA
Power Input	Connector
Video Output	MMCX Connector
Operating Temperature	-10℃ ~ +50℃ (Humidity : 0%RH ~ 80%RH)
Storage Temperature	-20℃ ~ +60℃ (Humidity : 0%RH ~ 90%RH)
Dimensions	42(W) X 42(H) X 1.2(D)

* Design and specifications are subject to change without notice.

Dimensions

