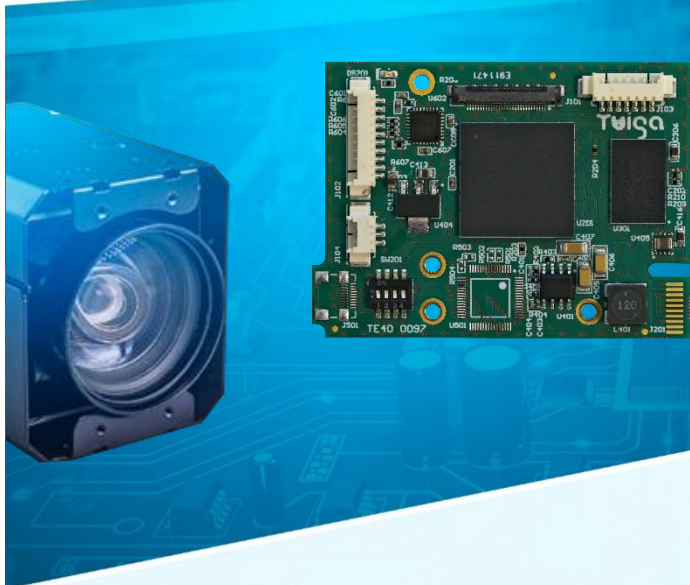


LVDS to ANALOG HD & SD INTERFACE BOARD For SONY FCB-EV7520 / EV7520A



SONY



Twiga has designed the first LVDS to analog HD & analog SD interface board for Sony FCB-EV7520 and new Sony FCB-EV7520A

FEATURES

- YPbPr analog HD video output
- CVBS & YC analog SD video output
- NTSC / PAL video format
- “Letter box” / “Crop” analog video conversion
- 720p50/60, 1080p25/30 (YPbPr)
- 1080p25/30 to PAL/NTSC (Y/C - CVBS)
- RS232 / TTL - VISCA serial control
- GPIO for zoom, focus, freeze control
- 8 to 12 VDC Power supply
- Size : 55mm x 41.5mm

Video format SD & HD

The board supports up to 1080p25/30 YPbPr analog HD video format and 1080p25/30 to analog SD NTSC/PAL video format.

“Letter box” or “Crop” conversion from HD 16/9 to SD 4/3 aspect ratio are available.

Serial and GPIO control

The board supports RS232 / TTL levels - VISCA protocol. GPIO are available for zoom, focus and freeze control.

Compact & cost effective solution

Highly compact, Twiga LVDS to analog HD & SD interface board is the ideal cost effective solution for a wide variety of applications.

TARGET APPLICATIONS



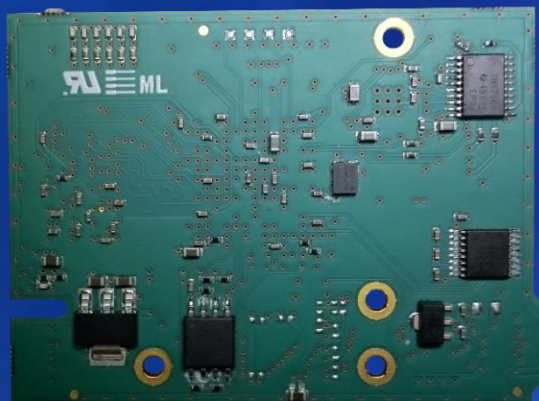
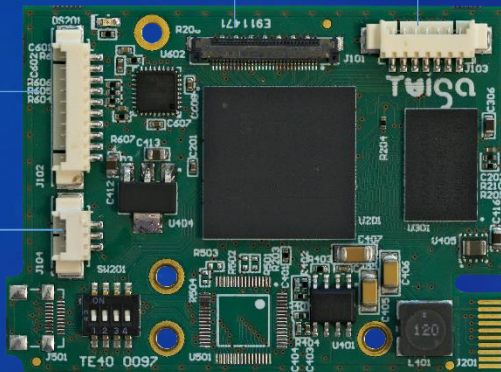
Drone / Video conferencing / UAV'S / ROV'S / Inspection / Low vision / Traffic control / ANPR / Medical

Onboard Connectors

J102	COM + Power + Analog
1	CVBS / Y
2	0V-GND
3	TxD (board input) TTL
4	RxD (board output) TTL
5	0V-GND
6	+ 8 to 12 V
7	0V-GND
8	C video / Pr
9	0V-GND
10	Y video / Pb

J104	RS232
1	0V-GND
2	RxD-232 (board output)
3	TxD-232 (board input)

J101 Sony LVDS Camera Input



J103	GPIOs
1	0V-GND
2	Zoom TELE
3	Zoom WIDE
4	Focus auto / manual
5	Focus NEAR
6	Focus FAR
7	Freeze

P/N – TV10 0071	LVDS to Analog HD & SD interface board for Sony FVB-EV range
Functions	Specifications
Analog HD video output	YPbPr
Analog SD video output	CVBS & Y/C NTSC/PAL format
Analog video conversion	« Letter box » or « Crop » format
GPIO control	Zoom, focus, freeze control
Camera control	TTL/RS232 levels - VISCA protocol
Power supply	8 to 12 VDC, 5 W (including camera)
Operating temperature range	0°C to 60°C
Storage temperature range	-20°C to 60°C
Regulation	EMC FCC part 15, PCB : UL 94 V0
Dimensions (mm)	55 (H) x 41.5 (W)

P/N - TV50 0015	Accessory set
Content	
30 way USL20-30SS-012-C micro coaxial cable	✓
10 way cable - power supply + COM + SD/HD output	✓
7 way cable – GPIO – Zoom, Focus, Freeze	✓
3 way cable – RS232	✓
Screws + spacers	✓

PB_TWIGA_LVDS to Analog HD & SD_03/10/2017



twiga-web.com

info@twiga-web.com
+33 5 32 09 17 24

116, route d'Espagne
Helios 6, Bal 507
31100 TOULOUSE
FRANCE