

RAISING THE BAR ON QUAD SPLIT



MVM230

23-inch Table Top or Field Applications



MVM200

20-inch Table Top, Field or Rack Mountable



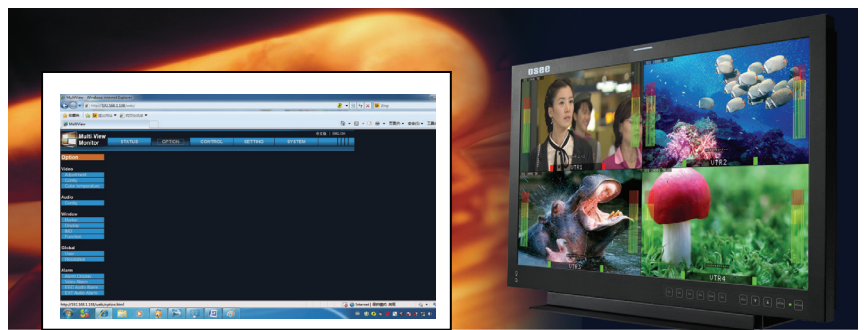
MVM170

17-inch Table Top, Field or Rack Mountable

Raising the Bar for Desktop Application

Key Features:

- ◆ Each model of the MVM series features a Multiviewer that is capable of displaying up to 4 simultaneous images from a variety of standard signal inputs.
- ◆ OSEE uses LCD panels in the MVM line that employ In Plane Switching (IPS) to provide the same viewing angles as a CRT monitor.
- ◆ 10-bit processing with our precise scaling engine.
- ◆ Each display screen is an independent fully featured monitor, with individual control of GAMMA, color temperature, brightness, and contrast parameters.
- ◆ Markers for center, safe area and safe title can be applied to each screen.
- ◆ Audio monitor speakers follow screen selections.



- ◆ Markers for center, safe area and safe title can be applied to each screen.
- ◆ The MVM Series Inputs Include:
 - 1Ch HDMI/DVI-D
 - Auto sensing 4ch 3G/HD/SD-SDI/Composite inputs.
 - A variety of preset display modes are available and easily accessed from the integrated control panel.
 - Presets include: Full screen with dedicated selection control buttons for each input.
 - Single image half screen with 3 small screens.
 - 4 uniform size screens.
 - Each screen includes a full set of analytic functions:
 - Waveform
 - Vectorscope
 - Analog stereo or embedded audio meter display, Imbedded time code.
 - IMD for Image Video or STL protocols plus manually entered assignment.

The MVM Series is an elegant solution that can handle the requests arising in the TV station, where one single work unit is required for computer display, content examination and multiple feed signal monitoring.

▶ Typical MVM Applications

Program Ingest, Payout and Streaming

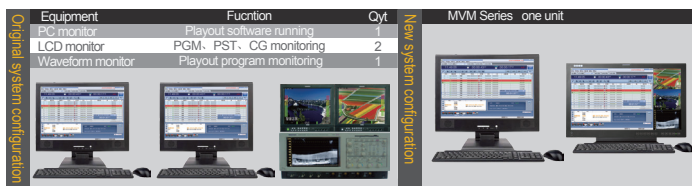
1. Uploading work unit of video server system

Many video server systems can simultaneously ingest several signals that must be monitored for content quality.



2. Channel Payout and control work unit

Like ingest of signals, payout can originate as multiple signals in typical digital broadcast, server, satellite and cable head ends that can be controlled by a single computer application.



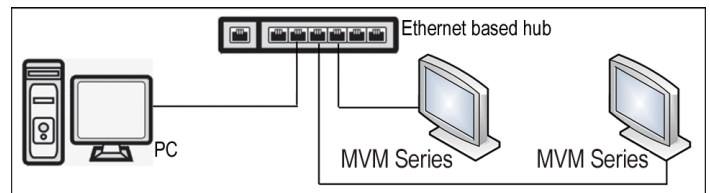
The MVM easily accommodates the need to view multiple channels of video with simultaneous display of a computer feed via the included HDMI connection that can accept DVI, VGA or HDMI signals. Like video images, the computer input is easily accessible from a dedicated control button.

▶ Video Wall

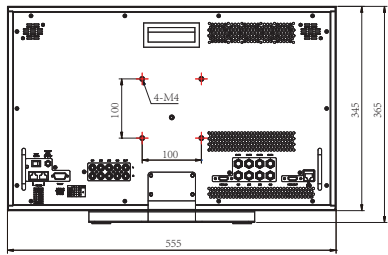
Several MVM units can be used to populate a video wall in rack mount applications providing a flexible display system in existing facilities with a low overall cost per screen. Each unit can be remotely accessed via the included RJ-45 Ethernet connection using an internal web server providing full control to each unit from any PC or tablet device with an integrated browser application.



The MVM Series incorporates a built-in server, so the control can be done through a PC via network.

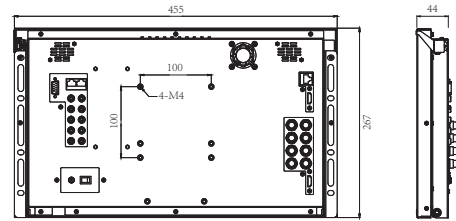


MVM230



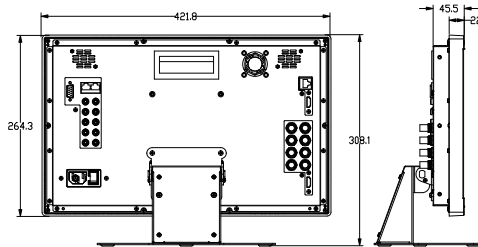
Main Body : 555×345×38 (mm)
21.85×13.58×1.50 (inch)

MVM200



Main Body : 455×267×44 (mm)
17.91×10.51×1.73 (inch)

MVM170



Main Body : 422×265×46 (mm)
16.61×10.43×1.81 (inch)

Specifications

		MVM230	MVM200	MVM170
Panel	Size(inch)	23	19.5	17.0
	Resolution		1920×1080	
	Color Depth		16.7M	
	Viewing Angle(deg)		178(H)×178(V)	
	Brightness(cd/m ²)	250		300
Input	Contrast Ratio	1000:1		700:1
	3G/HD/SD-SDI		4×BNC	
	HDMI		1×HDMI	
	CVBS		4×BNC	
Output	Analog Audio		8×RCA	
	3G/HD/SD-SDI		4×BNC	
	HDMI		1×HDMI	
	Analog Audio		2×RCA	
External Control	Speaker		2×4Ω5W	
	Earphone		3.5mm mini jack	
	GPI(IN)		8GPI , 1×DB9	
	RS485		2×RJ45(Can be cascaded)	
General	Ethernet		1×RJ45	
	Power		AC 100-240V 50/60Hz DC 19V 4.74A	
	Power Consumption	60W	55W	25W
	Operating Temperature		32 °F (0°C) to 95 °F (35°C) Recommended: 68 °F (20°C) to 86 °F (30°C)	
	Operating Humidity		30% to 85% (no condensation)	
	Storage Temperature		-4 °F (-20°C) to +140 °F (+60°C)	
	Storage Humidity		0% to 90%	
	Dimension (W×H×D)(With stand)(mm)	555×365×280	/	422×307×160
Dimension (W×H×D)(Without stand)(mm)	555×345×38	455×267×44	422×265×46	
SDI Signal Format	Weight(kg)	7.7	6.5	4.5
	Accessories Included	AC Power Cord(1), Adapter(1),Desk Stand(1), CD-ROM(1)		
	PAL		576i50	
	NTSC		480i59.94	
	SMPTE 274		1080p:50,59.94,60	
			1080p:23.98,24,25,29.97,30	
			1080i:50,59.94,60	
SMPTE 296		1080PsF:23.98,24,25,29.97,30		
SMPTE 260		720p:23.98,24,25,29.97,30,50,59.94,60 1035i:59.94,60		

* Specifications are subject to change without notice.