



12.1"

Capacitive Touch 800 nit HDMI Monitor

HDMI
4K 30Hz

80°C
-30°C
Operating Temp

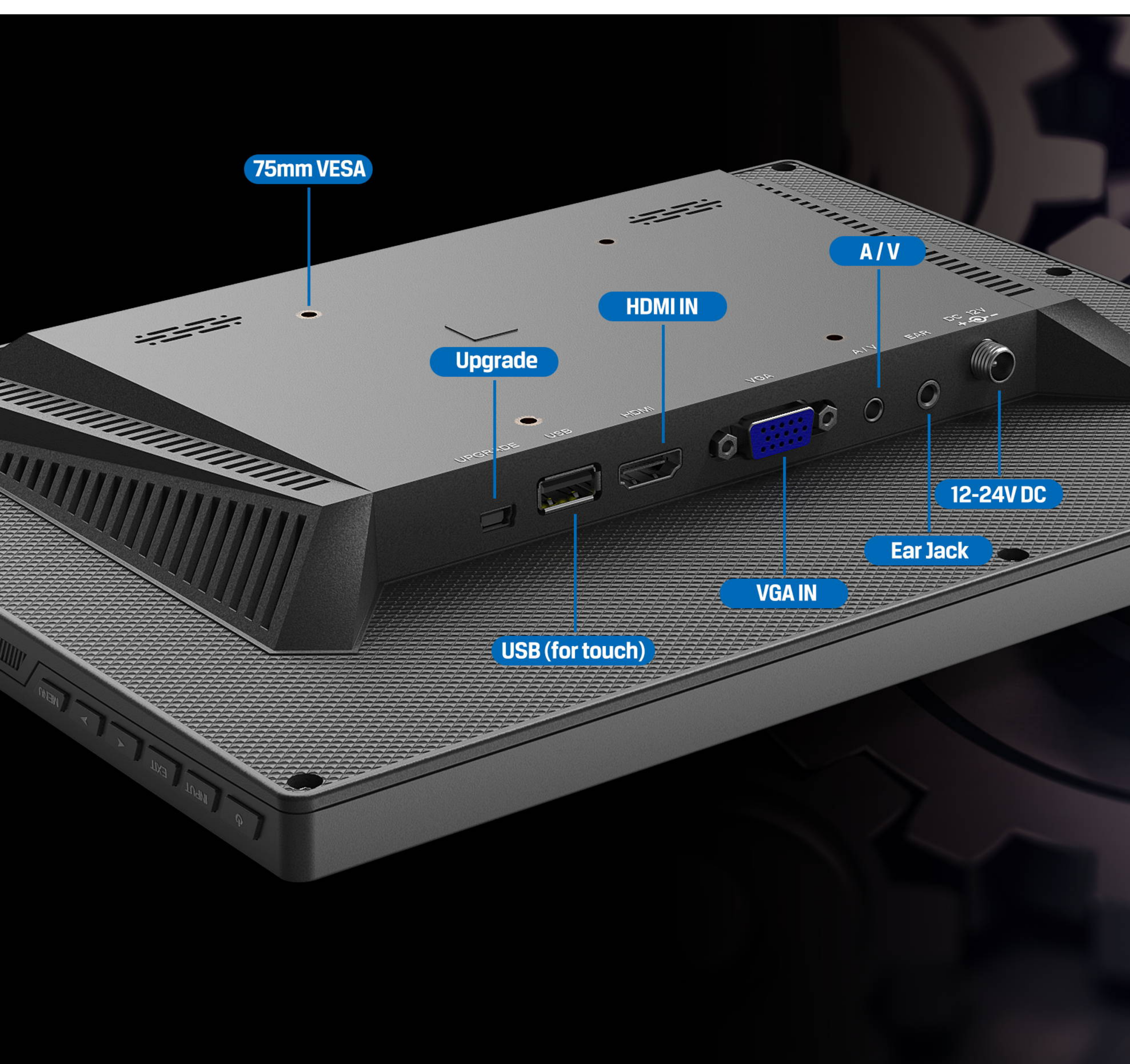
TOUCH
10-Points



High Brightness Touch Panel

It features 12.1" 4:3 LCD panel with 1024x768 resolution, 800 cd/m² high brightness, 900:1 contrast, 170° wide viewing angles, which has high level of environment absolute rating so that the panel can operate in a higher or lower temperature.

Moreover, flexible applications would be applied to various environments, such as commercial public display, outdoor advertising, industrial operation and so on.



HDMI+VGA Interfaces

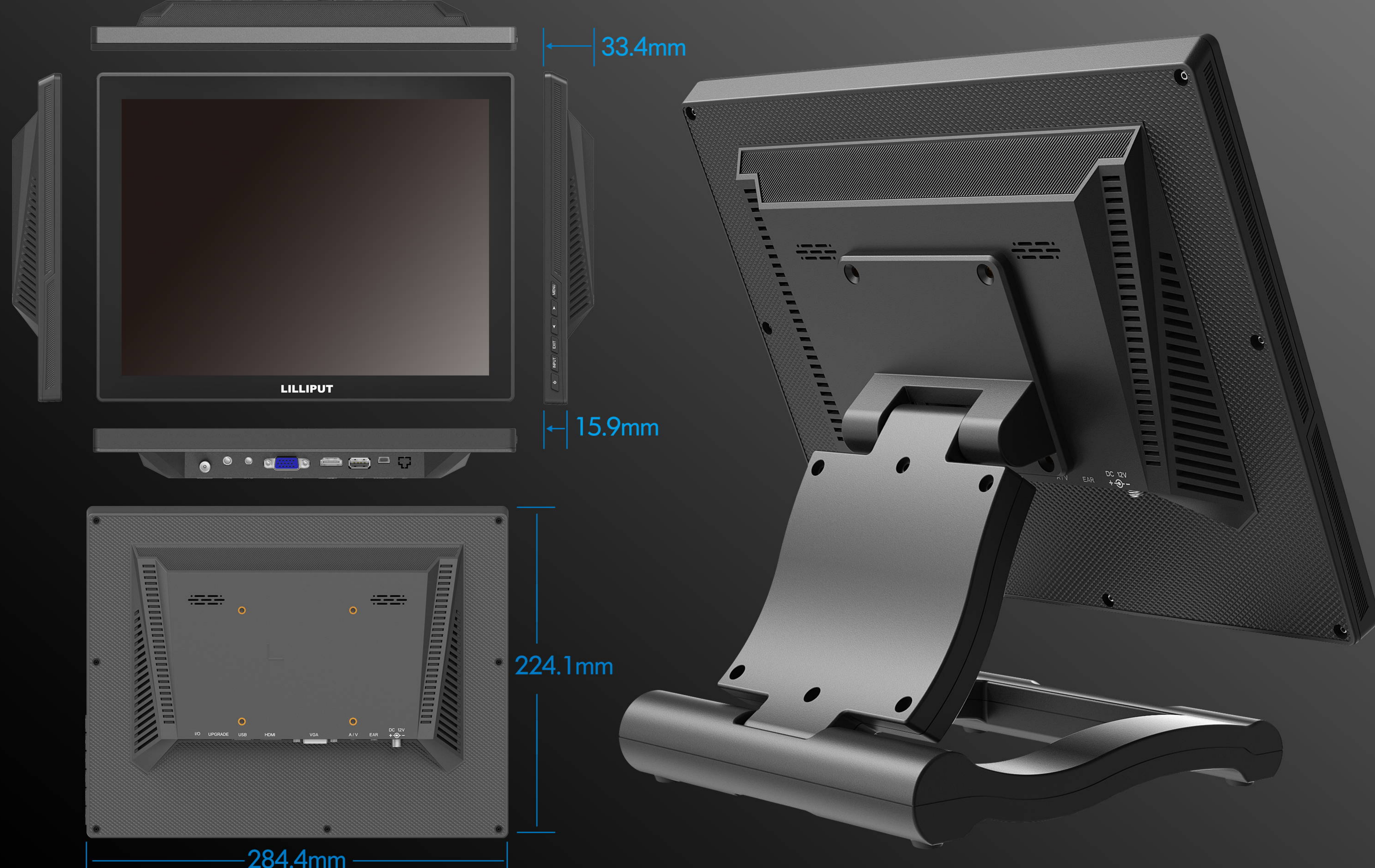
Compatible with HDMI (support 4K 30Hz) and VGA signals. Also, the touch driver loaded by USB can realize the touch operation on the screen.

High Temperature Resistance

With special screen panel, it can work well in 80°C environment, and storage in 85 °C high temperature will not affect its performance.

Wide Voltage Power

Built-in high level components to support 12 to 24V power supply voltage, allows to be used in more places.



75mm VESA Folding Bracket

Equipped with 75mm VESA folding bracket, it can not only be retracted freely, but save space on the desktop, wall and roof mounts, etc.

SPECIFICATIONS | ACCESSORIES

DISPLAY	Model No.	FA1210/C & FA1210/C/T
	Display Screen	12.1"
	Physical Resolution	1024x768
	Aspect Ratio	4:3
INPUT	Brightness	800cd/m ²
	Contrast	900:1
	Viewing Angle	170°/170°(H/V)
	Touch Screen	Capacitive
AUDIO	HDMI	HDMI 1.4b×1 (support 4K 30Hz)
	VGA	1
	AV	1
	Mini USB	1 (upgrade port)
POWER	USB	1 (for touch)
	Speaker	2
ENVIRONMENT	Ear Jack	1
	Current	≤1.1A(12V)
DIMENSION	Input Voltage	DC 12-24V
	Power Consumption	≤13W
	Operating Temperature	-30°C~80°C
	Storage Temperature	-30°C~85°C
	Dimension(LWD)	284.4mm × 224.1mm × 33.4mm
	Weight	1.27kg

