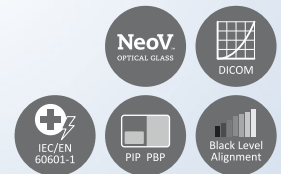


# MX-Series LCD Monitor 22" | 24"

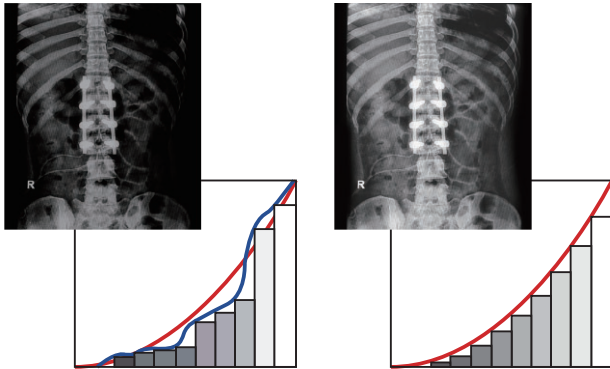


## Professional Clinical Review Displays of High Performance, Easy Maintenance



The MX-Series displays are designed for durability and easy cleaning. It features Full HD resolution, IEC/EN 60601-1 standard and DICOM Part 14 specification compliance, and provides excellent image quality, colour reproduction and image contrast. The MX-Series is specifically designed for 24/7 operation in demanding medical settings.





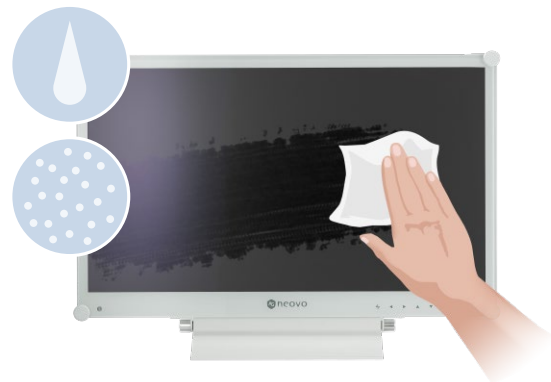
DICOM Mode

### Consistent Image Clarity

The MX-Series is compliant with the DICOM Part 14 standard specifications. This calibration function corrects gamma and luminance to achieve the smooth grayscale that is required for the accurate and consistent appearance of clinical data and other review images.

### Easy to Clean and Reliable Design

The anti-acid and anti-alkali coating treatment of the NeoV™ Optical Glass help the MX-Series withstand alcohol and other commonly used cleaning solutions. With the displays also bolstered by metal casing, this proprietary glass technology shields them from scratches and other damage.



### Versatility and Multitasking

Multiple signal source options, including HDMI and DisplayPort 1.2, offer the versatility for the MX-Series to integrate with other instruments. Its broad connectivity enables the PiP/PbP capability that makes multitasking possible—studying different images or matching medical records—in a single display.

### Medical-Grade Safety Certification

The MX-Series adopts a specially designed low-voltage medical-grade power supply to ensure safety, performance, and reliability in any professional medical environment. Compliance with the IEC/EN60601-1 standards ensures their safe and reliable performance in demanding medical settings.



IEC/EN 60601-1  
Medical-Grade

## Features

- Full HD 1920 x 1080 resolution
- Anti-Burn-in™ technology prevents image ghosting
- NeoV™ Optical Glass and metal housing for excellent cleanability and protection
- Crisp 20,000,000:1 dynamic contrast ratio
- Compliance with DICOM Part 14 with calibrated greyscale and brightness
- EN60601-1 and IEC60601-1 medical certification
- Equipotential terminal connector
- White exterior design for easy contaminant detection
- PiP/PbP functions enable multi-source viewing simultaneously
- Image Enhancer: 3D Deinterlace / Noise Reduction
- Versatile connectivity: DisplayPort, HDMI, DVI, VGA
- Front-sided IP22 Compliant (IEC 60529 Standard)
- EcoSmart Sensor automatically adjusts brightness level according to ambient lighting conditions
- Flicker-free display technology reduces eye discomfort
- Black-level adjustment for presenting more details in dark images
- VESA mounting for flexible installation in healthcare settings

### Specifications

#### MX-22

#### MX-24

#### Panel

	MX-22	MX-24
Panel Type	LED-Backlit TFT LCD (VA Technology)	LED-Backlit TFT LCD (VA Technology)
Panel Size	21.5"	23.8"
Max. Resolution	FHD 1920 x 1080	FHD 1920 x 1080
Pixel Pitch	0.248 mm	0.274 mm
Brightness	250 cd/m <sup>2</sup> 180 cd/m <sup>2</sup> (DICOM Preset)	300 cd/m <sup>2</sup> 250 cd/m <sup>2</sup> (DICOM Preset)
Contrast Ratio	20,000,000:1 (DCR)	-
Viewing Angle (H/V)	178°/178°	178°/178°
Display Colour	16.7M	16.7M
Response Time	3 ms	5 ms

#### Frequency

Frequency (H)	24 kHz-83 kHz	24 kHz-83 kHz
Frequency (V)	50 Hz-75 Hz	50 Hz-75 Hz

#### Signal Input

DisplayPort	x 1	x 1
HDMI	1.4 x 1	1.4 x 1
DVI	24-Pin DVI-D	24-Pin DVI-D
VGA	15-Pin D-Sub x 1	15-Pin D-Sub x 1

#### Audio

Audio In	Stereo Audio Jack (3.5 mm)	-
Internal Speakers	2W x 2	2W x 2

#### Power

Power Supply	External	External
Power Requirements	DC 12V, 2.5A	DC 12V, 2.5A
On Mode	16W (On)	18W (On)
Stand-by Mode	< 0.3W	< 0.5W
Off Mode	< 0.2W	< 0.3W

#### Glass

Thickness	3.0 mm (0.12")	3.0 mm (0.12")
Reflection Rate	< 1%	< 1%
Transmission Rate	> 97%	> 97%
Hardness	> 9H	> 9H

#### Operating Conditions

Temperature	0°C-40°C (32°F-104°F)	0°C-40°C (32°F-104°F)
Humidity	10%-90% (non-condensing)	10%-90% (non-condensing)

#### Storage Conditions

Temperature	-20°C-60°C (-4°F-140°F)	-20°C-60°C (-4°F-140°F)
Humidity	5%-95% (non-condensing)	5%-95% (non-condensing)

#### Mounting

VESA FPMPMI	Yes (100 x 100 mm & 75 x 75 mm)	Yes (100 x 100 mm & 75 x 75 mm)
-------------	---------------------------------	---------------------------------

#### StandV

Tilt	0° to 15°	3° to 21°
------	-----------	-----------

#### Security

Kensington Security Slot	Yes	Yes
--------------------------	-----	-----

#### Dimensions

Product with Base (W x H x D)	513.2 x 368.5 x 155.0 mm (20.2" x 14.5" x 6.1")	562.4 x 392.8 x 196.0 mm (22.1" x 15.4" x 7.7")
Product w/o Base (W x H x D)	513.2 x 324.3 x 56.2 mm (20.2" x 12.8" x 2.2")	562.4 x 352.6 x 56.2 mm (22.1" x 13.9" x 2.2")
Packaging (W x H x D)	614.0 x 477.0 x 204.0 mm (24.2" x 18.8" x 8.0")	672.0 x 517.0 x 249.0 mm (26.5" x 20.4" x 9.8")

#### Weight

Product w/o Base	6.2 kg (13.7 lb)	7.0 kg (15.4 lb)
Product with Base	6.7 kg (14.7 lb)	7.8 kg (17.2 lb)
Packaging	9.0 kg (19.8 lb)	10.9 kg (24.0 lb)

#### Regulation Approval

Certifications & Compliance	CE, LVD, RoHS, WEEE, REACH, EAC, UKCA	CE, LVD, RoHS, WEEE, REACH, EAC
Power Adaptor Certifications	ADAPTER/ATM065T-P120: CE, FCC, PSE, WEEE, BSMI, Medical Grade	ADAPTER/ATM065T-P120: CE, FCC, PSE, WEEE, BSMI, Medical Grade

#### Accessories

Supplied	Power Adaptor, Power Cord, VGA Cable, Audio Cable, Quick Start Guide, Warranty Card	Power Adaptor, Power Cord, VGA Cable, Audio Cable, Quick Start Guide, Warranty Card
----------	---	---

#### Optional Accessories

Ceiling Mount (Landscape only)	CMP-01+WMK-03	CMP-01+WMK-03
Wall Mount (Landscape only)	WMA-01, WMK-01, WMK-03, PMK-01	WMA-01, WMK-01, WMK-03, PMK-01
Desk Mount (Landscape only)	DMC-01, DMC-02D, DMS-01D, DMS-01Q, ES-02	DMC-01, DMC-02D, DMS-01D, DMS-01Q, ES-02
Handle	HDL-02	HDL-02

All specifications are subject to change without prior notice.

Copyright © 2022 AG Neovo. All rights reserved. The name AG Neovo is a trademark of AIC. All other trademarks are the property of their respective owners.

P/C: MX22C0/MX24B0 Version 6.1, 20220510



**Global Headquarters**

Taipei, Taiwan

**EMEA Regional Headquarters**

Capelle a/d IJssel, The Netherlands

**North & South America Regional Headquarters**

San Jose, CA, U.S.A.

**Asia-Pacific Regional Headquarters**

Taipei, Taiwan

**Canada Sales Office**

Vancouver, B.C., Canada

**China Sales Office**

Shanghai, China

**Czech Republic Sales Office**

Brno, Czech Republic

**Denmark Sales Office**

Støvring, Denmark

**Germany Sales Office**

Mechernich, Germany

**Italy Sales Office**

Livorno, Italy

**Poland Sales Office**

Warsaw, Poland

**Spain Sales Office**

Barcelona, Spain

**Ukraine Sales Office**

Lviv, Ukraine

[www.agneovo.com](http://www.agneovo.com)