



Field Monitor with Full HD IPS panel and 4K@30 Input / Output  
7-inch HDMI Model /SDI Model

**75HB/SB**

# Supports 4K@30 Input/Output to fully use the potential of the latest cameras. Ultra-light weight and simple design Field Monitor with a impressive 7-inch Full HD IPS display.

## 4K@30 In and Output

Supports maximum resolution of 4K@30 video input.



## HDMI In and Output

The field monitor supports both HDMI In and Output. HDMI Input supports video resolution of up to 4K30 to enable a clear picture on the Full HD IPS panel. The HDMI input signal is passed through to the HDMI output to support connection to other monitors or recorders. ※  
2)



## 3G-SDI In and Output

The 75SB supports 3G-SDI In and Output for professional use. The SDI Input signal is passed through to the SDI output to support connection to other monitors or recorders. ※3) ※4)



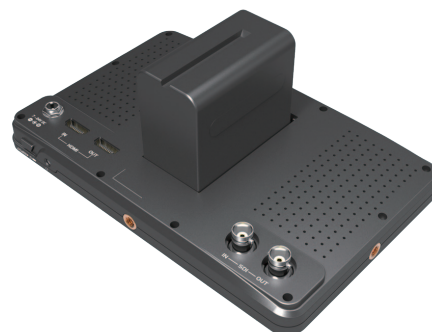
## Full HD 1920x1200 IPS Panel

The field monitor uses a Full HD IPS panel to allow dynamic rendering of pictures. A 6H hard protective glass is attached to the panel using OCA (Optical Clear Adhesive) to ensure clear and beautiful picture while also providing high protection to the product. The panel is seamlessly integrated into the body allowing for an easy fit in your hands.



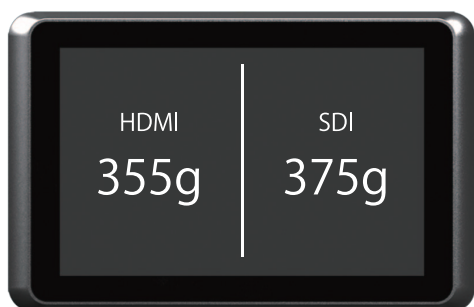
## Support for Sony 「NP-F970」 and Canon LP-E6 「LP-E6N」 type batteries

Power can be supplied from both DC input or Batteries. Sony 「NP-F970」 and Canon LP-E6 「LP-E6N」 type batteries can be directly attached to the field monitor. Using the provided AC adapter the field monitor can also work on DC input. Input voltage ranges from 7 ~ 24V to ensure high versatility. ※5)



## ■ Ultra-Light weight design for maximum portability

The 7-inch HDMI model [75HB] weight is 355g and the SDI model [75SB] weight is 375g making them optimal to use with cameras

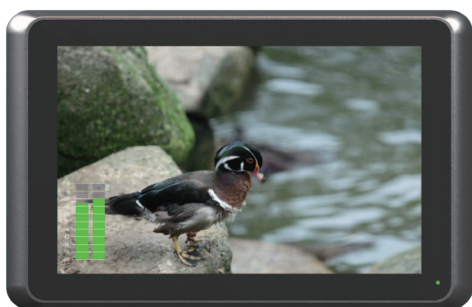


## ■ Peaking / False Color / Audio Level Meter and other functions

Using the OSD menu functions to assist monitoring can be set. Features included are [Peaking] to adjust focusing, [False Color] to enable visualization of level of exposure, [Exposure] settings to check for over exposure, [Level Meter] to check audio input level, [Histogram], [Center Marker], [Safety Marker] and others. A function key to allocate these features and a 3.5mm stereo audio output is also included. ※6)



Peaking



Audio Level Meter

## ■ 1/4-inch screw mount

1/4-inch screw mounts are provided on the sides to install tripods, hot shoes and camera arms. ※7)



## ■ Sunshade

A sunshade is provided for use under sunlight. The sunshade is made from light weight plastic with a black mate finish to ensure easy carrying and providing protection against glare from direct sunlight. ※8)



## ■ Optional Accessories



### Anti-glare protection film [75FLM]

Anti-glare film to protect against glare to improve visibility



### Ball head hot shoe [75FHS]

Ball head that can be easily attached to camera's hot shoe.



# Specification

Model Number		75HB	75SB
Color		Matte Black	
LCD Panel	Size	7-inch wide	
	Panel Type	IPS	
	Surface	Glare / Hard Coating 6H	
	Resolution	1920 x 1200	
	Brightness	450 cd/m <sup>2</sup>	
	Color	16.77 million colors	
	Contrast Ratio	1100:1	
	View Angle	160° (H)/160° (V)	
Input		HDMI x 1 ※1)	3G-SDI x 1 / HDMI x 1 ※1)
Output		HDMI x 1 ※1) Audio Line Out (3.5mm) x 1	3G-SDI x 1 / HDMI x 1 ※1)/ Audio Line Out (3.5mm) x 1
Speaker		none	
1/4-inch mount hole		4	
Power		DC 7 ~ 24V	
Power Consumption		Max. 8.2W	Max. 9.5W
Operating Temperature		0 ~ 50°C	
Storage Temperature		-20 ~ 60°C	
Operation Humidity / Storage Humidity		10 ~ 90% (without condensation)	
Size (mm) (※Protruding parts not included)		194.5 (W) x 125 (H) x 21 (D)	
Weight		355g	375g
Package Contents		AC Adaptor (DC12V) / Sunshade / Screws for Sunshade (3pcs) / Manual	
Warranty		1-Year	
Certification		FCC/CE/PSE/RoHS	

※1) HDCP is not supported ※2) Signal strength may deteriorate according to cable length and number of attached products. When using daisy chain an equalizer for HDMI maybe required  
 ※3) Signal strength may deteriorate according to cable length and number of attached products. When using daisy chain an equalizer for SDI maybe required  
 ※4) Cross conversion between HDMI and SDI is not supported ※5) Battery not included ※6) Some functions cannot be allocated to the function key  
 ※7) Accessories are sold separately ※8) Sunshade for 75HB and 75SB will use 1/4inch mounting holes on both sides and top of monitor. Sunshade will not provide full protection against glare  
 ◆ HDMI, HDMI logo, or High-Definition Multimedia Interface, are trademarks or registered trademarks of HDMI Licensing LLC ◆ Compatibility with all devices not guaranteed  
 ◆ Specifications and availability subject to change without notice. Actual products, product images, and online product images may vary from images shown here

## Supported Format

Format	Resolution	Frequency (Hz)
HDMI	480i	59.94 / 60
	480p	59.94 / 60
	576i	50
	576p	50
	720p	23.976 / 24 / 25 / 29.97 / 30 / 50 / 59.94 / 60
	1080i	50 / 59.94 / 60
	1080p	23.976 / 24 / 25 / 29.97 / 30 / 50 / 59.94 / 60
	2160p	23.976 / 24 / 25 / 29.97 / 30
	525i(NTSC)	60
	625i(PAL)	50
SDI	1920 x 720p	23.98 / 24 / 25 / 29.97 / 30 / 50 / 59.94 / 60
	1920 x 1080i	23.98 / 24 / 25 / 29.97 / 30 / 50 / 59.94 / 60
	1920 x 1080p	23.98 / 24 / 25 / 29.97 / 30 / 50 / 59.94 / 60

◆ Supports RGB, Y.Cb.Cr 4:2:2 and 4:4:4 8bpc ◆ TV formats only ◆ SDI only available with [Model : 75SB]. Supports Level A and B.

The latest information and the detailed product specifications are available at <http://www.ad-techno.com/en/>

Copyright (c) 2015 ADTECHNO Inc. All rights reserved. "ADTECHNO" and the ADTECHNO logo are registered trademarks of ADTECHNO Inc. All other brand names and trademarks or registered trademarks are the property of their respective owners. Pricing, specifications and availability subject to change without notice. Actual products, product images, and online product images may vary from images shown here. Not responsible for typographical errors.



[ Head Office ]

3F., 3-29, Ichigayahonmuracho, Shinjyuku-Ku, Tokyo 162-0845 Japan  
 TEL: +81 3 5206 3330 FAX: +81 3 5206 3339

[ Osaka Branch ]

7F., Fukusima Bldg., 5-13-18 Fukushima, Fukushima-Ku, Osaka 553-0003, Japan  
 TEL: +81 6 6451 0050

[ Taiwan Branch ]

3/4F., No.268, Liancheng Rd., Zhonghe Dist.,  
 New Taipei City 23553, Taiwan  
 TEL: +886 2 8227 9136 FAX: +886 2 8227 9186