

## SL Series 3G-SDI LCD Monitor

# SL2380S/SL2700S/SL3150S

- Full HD 1920x1080 panel LCD Monitor
- 3G-SDI Input with a loop out port
- Analog and Digital inputs support (HDMI/DVI-D/VGA/S-Video/Video)
- HDCP compliant
- Picture-In-Picture (PinP) and Picture-By-Picture (PbyP) functions
- 24/7 Long Time Operation with a rugged metal housing design
- Sturdy carrying handle and PSU holder<sup>1)</sup>
- Self-standing floor stand
- VESA (FPM PMI) 100x100 / 200x200mm support<sup>2)</sup>

Model NO. : SL2380S  
SL2700S  
SL3150S



## Introduction

SL2380S, SL2700S and SL3150S feature a 23.8, 27 and 31.5 inch 1920x1080 Full HD LED panel with wide view angles of 178° vertical and horizontal, a high contrast ratio of 3000:1, and with 3G-SDI, HDMI, DVI-D, VGA, S-Video, Video (BNC) input. 3G-SDI supports SMPTE 424M/SMPTE 292M/SMPTE 259M with 3G-SDI pass-through capability. SL3150S is also capable of displaying HDCP 1.4 protected media contents such as Blu-ray, etc.

SL Series Monitors have PinP (Picture-In-Picture) and PbyP (Picture-By-Picture) functions that enables to display 2 different analog and digital input video signals with a full screen at the same time as one other input signal displayed inset windows or different input signals with separate windows.

Designed for 24/7 continuous operation with a rugged metal housing. Sturdy carrying handles and a Power Supply Unit holder<sup>2)</sup> are attached at the back of the monitor for a secure installation and carrying around. SL Series Monitors are ideal for a wide range of applications: inspection/supervision-use at factory lines, educational institutes, exhibition and events, showrooms, video conference, surveillance, digital signage or as an OEM part integrated into another product.

## High resolution, wide view angle, high contrast LCD panel monitor

SL Series Monitor adapts Full HD 1920x1080 high resolution with 178 degrees (horizontally and vertically) wide view angle LCD panel.



## 3G-SDI input with a loop out support

SMPTE standard 3G-SDI input is fully supported by the SL series monitors. Uncompressed digital HD video and audio can be delivered over long distances via a single coaxial cable. It also includes SDI loop out support, outputting the SDI input signal via the SDI output port for chain connections or connecting to other display devices.



## PinP (Picture-In-Picture) and PbyP (Picture-By-Picture) function

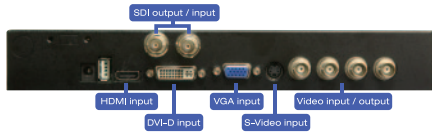
SL Monitor Series have Picture-In-Picture (PinP) and Picture-By-Picture (PbyP) functions that enables to display 2 different analog and digital input video signals with a full screen at the same time as one other input signal displayed inset windows or different input signals with separate windows.



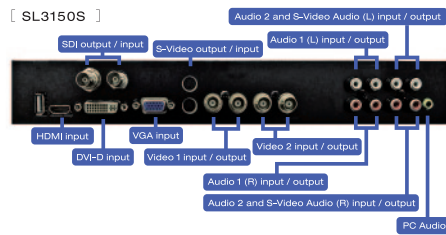
## Multi-input signal support

SL series monitors support both digital and analog input signals with variable input interfaces, HDMI, DVI-D, VGA, S-Video and Video.

[ SL2380S / SL2700S ]

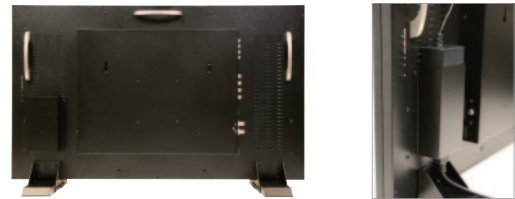


[ SL3150S ]



## Sturdy Carry Handles and PSU holder

Carry handles and a Power Supply Unit holder<sup>2)</sup> are attached at the back of the monitor for a secure installation and carrying around. video conference, surveillance, digital signage or as an OEM part integrated into another product.



## 24/7 long time operation with a rugged metal housing design

SL Series Monitors are designed for 24/7 continuous operation with a rugged metal housing, ideal for a wide range of applications: inspection/supervision-use at factory lines, educational institutes, exhibition and events, showrooms,

## Self-standing floor stand

SLSeries Monitor come with heavy duty self-standing floor stands.



## Specification

Model No.	SL2380S	SL2700S	SL3150S
Color	Black	Black	Black
Display	Size	23.8"	31.5"
	Aspect Ratio	16:9	16:9
	Resolution	1920x1080	1920x1080
	Brightness	300 cd/m2	300 cd/m2
	Contrast Ratio	3000:1	3000:1
	View Angle	178°(V) / 178°(H)	178°(V) / 178°(H)
Power	DC12V	DC12V	DC12V
Input	3G-SDI (BNC) / HDMI / DVI-D / VGA / Video (BNC) x 2 / S-Video / Audio (RCA) x 2 / Audio (3.5mm) x 1		
Output	3G-SDI (BNC) / Video (BNC) x 2 / Audio (RCA) x 2		
Speaker	2 Watt (mono)	2 Watt (mono)	2 Watt (mono)
VESA (FPMPMI) standard	100x100mm	100x100mm	100x100mm
Power	DC 12V	DC 12V	DC 24
Power Consumption	32W (Max)	32W (Max)	58W (Max)
Operating Temperature	0°C ~ 40°C	0°C ~ 40°C	0°C ~ 40°C
Dimensions	586 x 353 x 64 mm *excl. stand	440 x 299 x 56 mm *incl. stand	762 x 456 x 94 mm *excl. stand
Weight	Approx. 5.6kg	Approx. 6.9kg	Approx. 12.9kg
Certification	FCC, CE, RoHS	FCC, CE, RoHS	FCC, CE, RoHS
Package Contents	Stand / PSU holder <sup>1)</sup> / VGA Cable / AC Adaptor/Remote Controller/ Manual		

※Specifications and availability subject to change without notice. Actual products, product images, and online product images may vary from images shown here. Not responsible for typographical errors  
 ※HDMI, HDMI logo, or High-Definition Multimedia Interface, are trademarks or registered trademarks of HDMI Licensing LLC. ※Compatibility with ALL devices not guaranteed.  
<sup>1)</sup> PSU holde is included only for SL3150S <sup>2)</sup> VESA (FPMPMI) 200x200 is supported only for SL3150S

The latest information and the detailed product specifications are available at [www.ad-techno.com/en/](http://www.ad-techno.com/en/)

Copyright (c) ADTECHNO Inc. All rights reserved. "ADTECHNO" and the ADTECHNO logo are registered trademarks of ADTECHNO Inc.

All other brand names and trademarks or registered trademarks are the property of their respective owners. Pricing, specifications and availability subject to change without notice. Actual products, product images, and online product images may vary from images shown here. Not responsible for typographical errors.



3F., 3-29, Ichigayahonmuracho, Shinjyuku-Ku, Tokyo 162-0845 Japan  
 TEL: +81 3 5206 3330 FAX: +81 3 5206 3339

Osaka Branch

7F., Fukusima Bldg., 5-13-18 Fukushima, Fukushima-Ku, Osaka 553-0003, Japan  
 TEL: +81 6 6451 0050

Taiwan Branch / Factory

3/4F., No.268, Liancheng Rd., Zhonghe Dist., New Taipei City 23553, Taiwan  
 TEL: +886 8227 9136 FAX: +886 2 8227 9186