

12.5" 4K LCD monitor with 12G-SDI support

UH1250S

- 12.5" native 4K UHD IPS panel
- Multi-format SDI input/output (12G/6G/3G/HD-SDI)
- Support for 2SI and SQD Quad 3G-SDI input/output
- Tally function (D-Sub 9 pin)
- 1/4" screw mounts
- 4H hard protective panel
- 2 Way Power Supply (DC / 4pin XLR)
- Support for external battery
(Screw mounts for V-Mount on back side)



Model NO. : UH1250S



Introduction

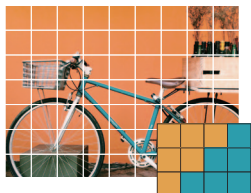
UH1250S features a 12.5-inch native 4K Ultra HD (3840x2160) resolution IPS panel with 12G/6G/3G-SDI support. 4K output is supported by single 12G and 6G-SDI as well as Quad 3G-SDI. 2SI and SQD are both supported for Quad 3G-SDI. This model also supports 1x HDMI 2.0 port for Ultra HD content at 60Hz as well as 3x HDMI 1.4 ports for Ultra HD content at 30hz. UH1250S is compliant with HDCP. Compared to conventional HD LCD panels the 4K IPS LCD panel has a 4 times higher display resolution. The 4K UHD panel allows for playback of 4 Full HD contents in 4-way split screen mode. Vertical and horizontal 2-way split screen, PIP and Safety Marker functions to assist creators are also supported. In addition to a rugged metal frame housing a 4H hard protective panel is also included. The included self-standing floor stand includes screw holes for additional stability at any location. 1/4" screw mounts on top, bottom and both sides allow installation of tripods, monitor arms and clamps.

12.5" native 4K UHD IPS panel

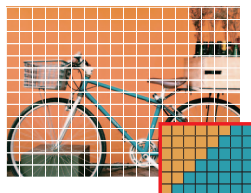
Compared to conventional Full HD panels the 4K IPS panel has a 4 times higher resolution. The 4K panel has high brightness (350cd/m2), wide viewing angle (178deg/178deg) and high contrast (1000:1) 4x higher resolution than Full HD due to 4K UHD support



4x higher resolution than Full HD due to 4K UHD support



Full HD (1920x1080)

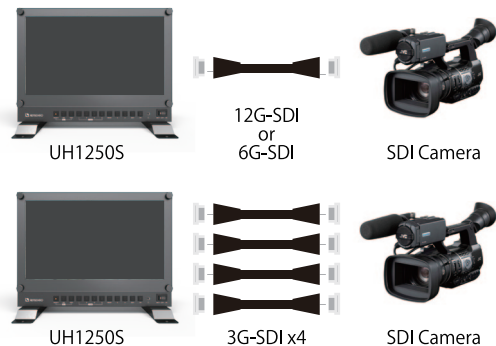


4K UHD (3840x2160)

※ More pixels than Full HD.
Smooth and high detailed picture

Multi-format SDI input/output

Support for 12G/6G/3G/HD/SDI and 2SI/SQD Quad 3G-SDI Supports 4K using single 12G or 6G-SDI as well as Quad 3G-SDI 2SI and SQD are supported for Quad 3G-SDI SDI OUT with pass through from SDI IN.

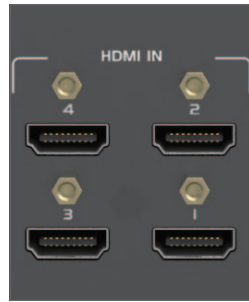


2SI / SQD Support



4x HDMI ports (1x HDMI 2.0/ 3x HDMI 1.4)

1x HDMI 2.0 port for 4K@60 and
3x HDMI 1.4 ports for 4K@30
with support for HDCP 1.4 for
playback of protected contents
like Blu-ray *1



Tally function (D-sub 9 pin)

Green or Red color bar to indicate which monitors output is
being recorded or broadcasted.



1/4" mounting holes

4x 1/4" mounting holes to support tripods and monitor
arms



Dual power input

Dual power input to support DC with included AC adaptor
or 4pin XLR connector.

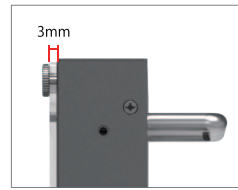
DC input is equipped with a screw lock to prevent
accidental removal of power plug.



4H hard protective panel included

In addition to a rugged metal housing a 4H hard protective panel is
included.

The included self-standing floor stand includes screw holes for
additional stability at any location.



4H hard (3mm) protective acrylic panel

Support for external batteries (mounting holes for V-Mount brackets)

Mounting holes for V-Mount battery
plates on the back side to allow
usage outdoors



Specification

Model No.	UH1250S
Color	Black
Panel	12.5" 16:9 Wide format IPS Panel
Resolution	3840x2160
Response Time	30ms
Brightness	350 cd/m2
Contrast Ratio	1000:1
Viewing Angle	178° (H) / 178° (V)
Input	12G-SDI x 2 / 3G-SDI x 2 / 3.5mm Stereo headphone jack
Output	12G-SDI x 2 / 3G-SDI x 2 / 3.5mm Stereo
Other I/O	mini D-sub 9 pin (for Tally)
Speaker	2W x1 (L&R)
External battery	V-Mount plate mounting holes
Stand	Self-standing floor stand
1/4" mounting holes	4x 1/4" mounting holes
Power	DC12-24V (recommended 15V) / 4 pin XLR
Power Consumption	Max. 29W
Operating Temperature	0 to 40 degrees
Storage Temperature	-20 to 60 degrees
Size	311(W) x 229(H) x 36(D) mm (not including stand)
Weight	approx. 2800gr (not including stand)
Accessories	AC adaptor / Manual
Certification	FCC / CE / PSE / RoHS

*1 HDCP 2.2 is not supported
4Pin XLR cable is not included
Running time is approx..3.2hr using ITX V mount type lithium ion battery DUO-C95
(theoretical value)
HDMI, HDMI logo, or High-Definition Multimedia Interface are trademarks or registered
trademarks of HDMI Licensing LLC.
Due to product improvements, specifications are subject to change without notice.
Compatibility with ALL devices not guaranteed.

The latest information and the detailed product specifications are available at www.ad-techno.com/en/

Copyright (c) ADTECHNO Inc. All rights reserved."ADTECHNO" and the ADTECHNO logo are registered trademarks of ADTECHNO Inc.
All other brand names and trademarks or registered trademarks are the property of their respective owners. Pricing, specifications and availability subject to change without notice.
Actual products, product images, and online product images may vary from images shown here. Not responsible for typographical errors.



3F., 3-29, Ichigayahonmuracho, Shinjyuku-Ku, Tokyo 162-0845 Japan
TEL: +81 3 5206 3330 FAX: +81 3 5206 3339

Osaka Branch
7F., Fukusima Bldg., 5-13-18 Fukushima, Fukushima-Ku, Osaka 553-0003, Japan
TEL: +81 6 6451 0050

Taiwan Branch / Factory
3/4F., No.268, Liancheng Rd., Zhonghe Dist., New Taipei City 23553, Taiwan
TEL: +886 8227 9136 FAX: +886 2 8227 9186