

Tokina

55X SUPER-MOTORIZED ZOOM LENS

TM55Z1038AI

f=10-550mm F3.8 Video Auto Iris

TM55Z1038AIPN

f=10-550mm F3.8 Video Auto Iris with Preset

SPECIFICATIONS

MODEL NUMBER	TM55Z1038AI/TM55Z1038AIPN	
IMAGE FORMAT	1/2inch	
MOUNT	C	
FOCAL LENGTH	10-550mm	
MAXIMUM APERTURE	F1 : 3.8	
APERTURE RANGE	F1:3.8-360	
M.O.D.	5.0m	
ANGLE OF VIEW () = 1/3"	HORIZONTAL	W34.57°- T0.69° (W26.33°- T0.52°)
	VERTICAL	W26.33°- T0.52° (W19.83°- T0.39°)
FILTER SIZE	M95.0mm P=1.0	
BACK FOCAL LENGTH	47.37mm	
DIMENSIONS	W132.0 × H120.5 × L298.5mm	
WEIGHT	4.07kg	
OPERATING TEMPERATURE	-10°C ~ +50°C	
OPERATING HUMIDITY	RH90% at 40°C	

• VIDEO AUTO IRIS

INPUT VOLTAGE	DC+8V ~ +16V
CURRENT CONSUMPTION	Less than 30mA
INPUT SIGNAL	VS or V Signal
IRIS ACCURACY	±15% (Video Signal Level)
SENSITIVITY	0.5~1.0Vp-p (Video Signal)
RESPONSE SPEED	Approx. 4 Seconds
LEVEL REMOTE CONTROL	1.0V~5.5V (See #1 in Right)

• FOCUS

INPUT VOLTAGE	DC+6 ~ +12V
CURRENT CONSUMPTION	Less than 40mA
MOTORIZATION SPEED	Approx. 13 Sec. (6V)

• ZOOM

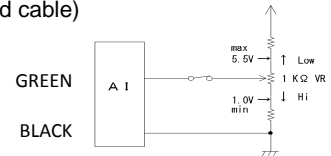
INPUT VOLTAGE	DC+6 ~ +12V
CURRENT CONSUMPTION	Less than 50mA
MOTORIZATION SPEED	Approx. 8 Sec. (6V)

CABLE CONNECTIONS

• VIDEO AUTO IRIS (4-wire shield cable)

CABLE COLOR	CONNECTION
Red	Power (DC8V-16V)
White	VS or V Signal
Green	Level Remote (See #1 in below)
Black	GND

#1: Detail of iris level remote control on iris cable
(4-wires shield cable)



• FOCUS

CABLE COLOR	POLARITY	DIRECTION
Black	+ (-)	Inf. (Near)
Red	- (+)	

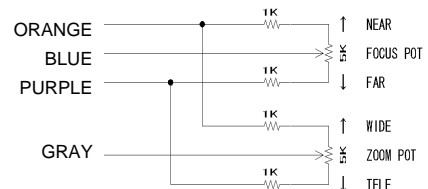
• ZOOM

CABLE COLOR	POLARITY	DIRECTION
Green	+ (-)	Wide (Tele)
White	- (+)	

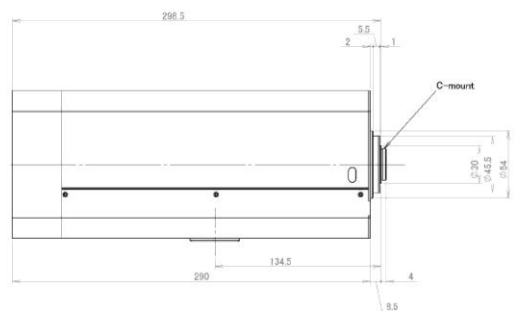
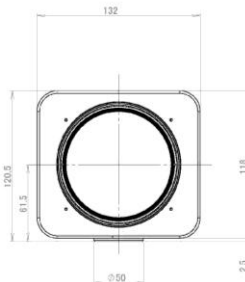
• POTENTIO METER-PRESET (TM55Z1038AIPN only)

CABLE COLOR	CONNECTION
Orange	Pot. Supply
Blue	Focus Pot. Wiper
Purple	Pot. Return
Gray	Zoom Pot. Wiper

Detail of preset cable wiring for focus / zoom



APPEARANCE



DESIGN AND SPECIFICATIONS ARE SUBJECT TO CHANGE WITHOUT NOTICE

Tokina

55X SUPER-MOTORIZED ZOOM LENS

TM55Z1038N	f=10-550mm F3.8 3-Motors
TM55Z1038NPN3	f=10-550mm F3.8 3-Motors with Preset (Focus/Zoom/Iris)

SPECIFICATIONS

MODEL NUMBER	TM55Z1038N / TM55Z1038NPN3		
IMAGE FORMAT	1/2inch		
MOUNT	C		
FOCAL LENGTH	10-550mm		
MAXIMUM APERTURE	F1 : 3.8		
APERTURE RANGE	F1:3.8-Close		
M.O.D.	5.0m		
ANGLE OF VIEW () = 1/3"	DIAGONAL	W42.66° - T0.86°	(W32.63° - T0.64°)
	HORIZONTAL	W34.57° - T0.69°	(W26.33° - T0.52°)
	VERTICAL	W26.33° - T0.52°	(W19.83° - T0.39°)
FILTER SIZE	M95.0mm P=1.0		
BACK FOCAL LENGTH	47.37mm		
DIMENSIONS	W132.0 × H120.5 × L298.5mm		
WEIGHT	4.07kg		
OPERATING TEMPERATURE	-10°C ~ +50°C		
OPERATING HUMIDITY	RH90% at 40°C		

Electrical	IRIS	FOCUS	ZOOM
INPUT VOLTAGE	+6 ~ +12VDC	+6 ~ +12VDC	+6 ~ +12VDC
CURRENT CONSUMPTION	Less than 30mA	Less than 40mA	Less than 50mA
MOTORIZATION SPEED	Approx. 6 Sec. (6V)	Approx. 13 Sec. (6V)	Approx. 8 Sec. (6V)

CABLE CONNECTIONS

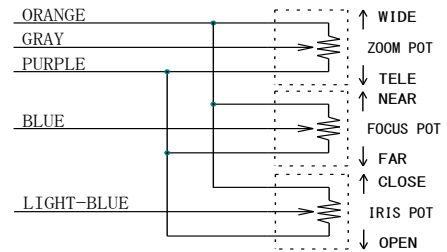
• IRIS / FOCUS / ZOOM

FUNCTIONS	CABLE COLOR	POLARITY	DIRECTIONS
IRIS	Brown	+ (-)	Close (Open)
	Yellow	- (+)	
FOCUS	Black	+ (-)	Inf. (Near)
	Red	- (+)	
ZOOM	Green	+ (-)	Wide (Tele)
	White	- (+)	

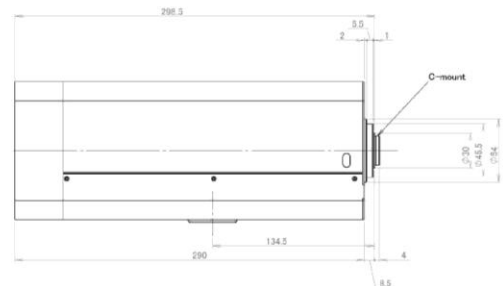
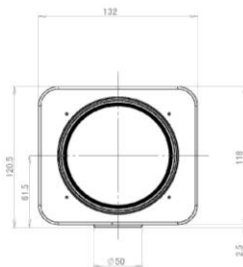
• POTENTIO METER-PRESET (TM55Z1038NPN3 only)

CABLE COLOR	CONNECTION	POTENTIO RESISTANCE
Orange	Pot. Supply	Focus : 5KΩ (±5%) 1W Zoom : 5KΩ (±5%) 1W Iris : 5KΩ (±20%) 0.125W
Blue	Focus Pot. Wiper	
Purple	Pot. Return	
Gray	Zoom Pot. Wiper	
Light Blue	Iris Pot. Wiper	

Detail of preset cable wiring for focus / zoom / Iris



APPEARANCE



Tokina

55X SUPER-MOTORIZED ZOOM LENS

TM55Z1038N	f=10-550mm F3.8 3-Motors
TM55Z1038NPN	f=10-550mm F3.8 3-Motors with Preset (Focus/Zoom)

SPECIFICATIONS

MODEL NUMBER		TM55Z1038N / TM55Z1038NPN
IMAGE FORMAT		1/2inch
MOUNT		C
FOCAL LENGTH		10-550mm
MAXIMUM APERTURE		F1 : 3.8
APERTURE RANGE		F1:3.8-Close
M.O.D.		5.0m
ANGLE OF VIEW () = 1/3"	DIAGONAL	W42.66° - T0.86° (W32.63° - T0.64°)
	HORIZONTAL	W34.57° - T0.69° (W26.33° - T0.52°)
	VERTICAL	W26.33° - T0.52° (W19.83° - T0.39°)
FILTER SIZE		M95.0mm P=1.0
BACK FOCAL LENGTH		47.37mm
DIMENSIONS		W132.0 × H120.5 × L298.5mm
WEIGHT		4.07kg
OPERATING TEMPERATURE		-10°C ~ +50°C
OPERATING HUMIDITY		RH90% at 40°C

Electrical	IRIS	FOCUS	ZOOM
INPUT VOLTAGE	+6 ~ +12VDC	+6 ~ +12VDC	+6 ~ +12VDC
CURRENT CONSUMPTION	Less than 30mA	Less than 40mA	Less than 50mA
MOTORIZATION SPEED	Approx. 6 Sec. (6V)	Approx. 13 Sec. (6V)	Approx. 8 Sec. (6V)

CABLE CONNECTIONS

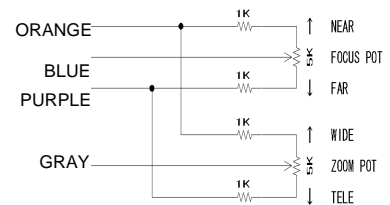
• IRIS / FOCUS / ZOOM

FUNCTIONS	CABLE COLOR	POLARITY	DIRECTIONS
IRIS	Brown	+ (-)	Close (Open)
	Yellow	- (+)	
FOCUS	Black	+ (-)	Inf. (Near)
	Red	- (+)	
ZOOM	Green	+ (-)	Wide (Tele)
	White	- (+)	

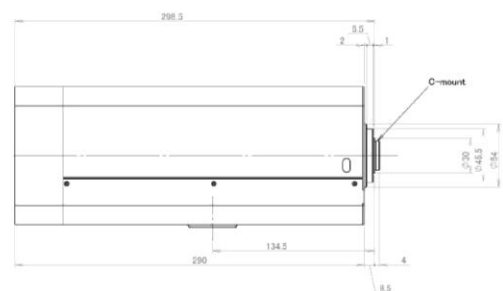
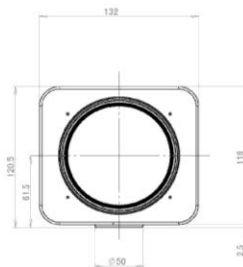
• POTENTIO METER-PRESET (TM55Z1038NPN only)

CABLE COLOR	CONNECTION	POTENTION RESISTANCE
Orange	Pot. Supply	Focus : 5K Ω (\pm 5%) 1W Zoom : 5K Ω (\pm 5%) 1W
Blue	Focus Pot. Wiper	
Purple	Pot. Return	
Gray	Zoom Pot. Wiper	

Detail of preset cable wiring for focus / zoom



APPEARANCE



Tokina

55X SUPER-MOTORIZED ZOOM LENS

TM55Z1038N f=10-550mm F3.8 3-Motors
TM55Z1038NPN3 f=10-550mm F3.8 3-Motors with Preset (Focus/Zoom/Iris)

SPECIFICATIONS

MODEL NUMBER	TM55Z1038N / TM55Z1038NPN3		
IMAGE FORMAT	1/2inch		
MOUNT	C		
FOCAL LENGTH	10-550mm		
MAXIMUM APERTURE	F1 : 3.8		
APERTURE RANGE	F1:3.8-Close		
M.O.D.	5.0m		
ANGLE OF VIEW () = 1/3"	DIAGONAL	W42.66° - T0.86°	(W32.63° - T0.64°)
	HORIZONTAL	W34.57° - T0.69°	(W26.33° - T0.52°)
	VERTICAL	W26.33° - T0.52°	(W19.83° - T0.39°)
FILTER SIZE	M95.0mm P=1.0		
BACK FOCAL LENGTH	47.37mm		
DIMENSIONS	W132.0 × H120.5 × L298.5mm		
WEIGHT	4.07kg		
OPERATING TEMPERATURE	-10°C ~ +50°C		
OPERATING HUMIDITY	RH90% at 40°C		

Electrical	IRIS	FOCUS	ZOOM
INPUT VOLTAGE	+6 ~ +12VDC	+6 ~ +12VDC	+6 ~ +12VDC
CURRENT CONSUMPTION	Less than 30mA	Less than 40mA	Less than 50mA
MOTORIZATION SPEED	Approx. 6 Sec. (6V)	Approx. 13 Sec. (6V)	Approx. 8 Sec. (6V)

CABLE CONNECTIONS

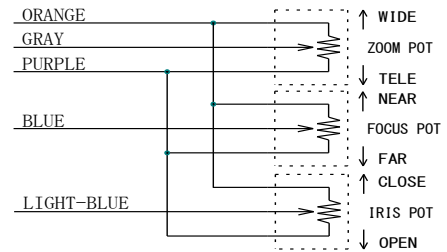
• IRIS / FOCUS / ZOOM

FUNCTIONS	CABLE COLOR	POLARITY	DIRECTIONS
IRIS	Brown	+ (-)	Close (Open)
	Yellow	- (+)	
FOCUS	Black	+ (-)	Inf. (Near)
	Red	- (+)	
ZOOM	Green	+ (-)	Wide (Tele)
	White	- (+)	

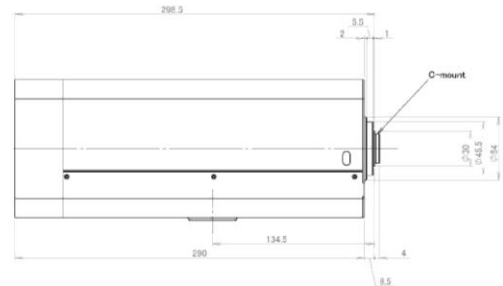
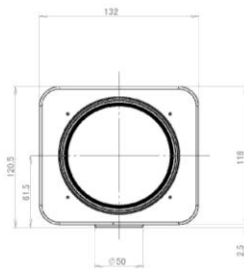
• POTENTIO METER-PRESET (TM55Z1038NPN3 only)

CABLE COLOR	CONNECTION	POTENTIO RESISTANCE
Orange	Pot. Supply	Focus : 5KΩ (±5%) 1W Zoom : 5KΩ (±5%) 1W Iris : 5KΩ (±20%) 0.125W
Blue	Focus Pot. Wiper	
Purple	Pot. Return	
Gray	Zoom Pot. Wiper	
Light Blue	Iris Pot. Wiper	

Detail of preset cable wiring for focus / zoom / Iris



APPEARANCE



Tokina

55X SUPER-MOTORIZED ZOOM LENS

TM55Z1038N	f=10-550mm F3.8 3-Motors
TM55Z1038NPN	f=10-550mm F3.8 3-Motors with Preset (Focus/Zoom)

SPECIFICATIONS

MODEL NUMBER		TM55Z1038N / TM55Z1038NPN
IMAGE FORMAT		1/2inch
MOUNT		C
FOCAL LENGTH		10-550mm
MAXIMUM APERTURE		F1 : 3.8
APERTURE RANGE		F1:3.8-Close
M.O.D.		5.0m
ANGLE OF VIEW () = 1/3"	DIAGONAL	W42.66° - T0.86° (W32.63° - T0.64°)
	HORIZONTAL	W34.57° - T0.69° (W26.33° - T0.52°)
	VERTICAL	W26.33° - T0.52° (W19.83° - T0.39°)
FILTER SIZE		M95.0mm P=1.0
BACK FOCAL LENGTH		47.37mm
DIMENSIONS		W132.0 × H120.5 × L298.5mm
WEIGHT		4.07kg
OPERATING TEMPERATURE		-10°C ~ +50°C
OPERATING HUMIDITY		RH90% at 40°C

Electrical	IRIS	FOCUS	ZOOM
INPUT VOLTAGE	+6 ~ +12VDC	+6 ~ +12VDC	+6 ~ +12VDC
CURRENT CONSUMPTION	Less than 30mA	Less than 40mA	Less than 50mA
MOTORIZATION SPEED	Approx. 6 Sec. (6V)	Approx. 13 Sec. (6V)	Approx. 8 Sec. (6V)

CABLE CONNECTIONS

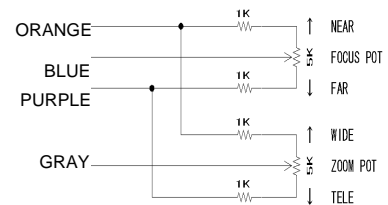
• IRIS / FOCUS / ZOOM

FUNCTIONS	CABLE COLOR	POLARITY	DIRECTIONS
IRIS	Brown	+ (-)	Close (Open)
	Yellow	- (+)	
FOCUS	Black	+ (-)	Inf. (Near)
	Red	- (+)	
ZOOM	Green	+ (-)	Wide (Tele)
	White	- (+)	

• POTENTIO METER-PRESET (TM55Z1038NPN only)

CABLE COLOR	CONNECTION	POTENTIATION RESISTANCE
Orange	Pot. Supply	Focus : 5K Ω (\pm 5%) 1W Zoom : 5K Ω (\pm 5%) 1W
Blue	Focus Pot. Wiper	
Purple	Pot. Return	
Gray	Zoom Pot. Wiper	

Detail of preset cable wiring for focus / zoom



APPEARANCE

