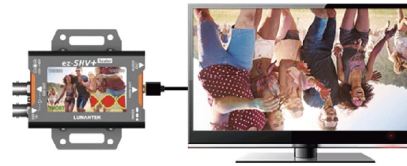


pattern at once. LUMANTEK's ez-SHV+ has a SDI LOOP output. Through the LCD screen, you can monitor incoming video. By using the 'dip switch', you can select the resolution from 480i to 1080p. You can also control the LCD Brightness and screen ratio.

### Mirrored output for teleprompter



It can be vertically flip(mirrored) the HDMI output by pressing the mode switch for more than 6 seconds while the LCD OFF. It is perfect to be used for teleprompter and supports only HD resolutions.

### Detect Cable Length Automatically

	SHORT	MEDIUM	LONG	
3G-SDI	0M	60M	120M	max. 190
HD-SDI	0M	80M	160M	max. 280
SD-SDI	0M	140M	280M	max. 450

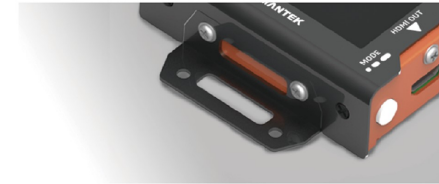
ez-SHV+ detects cable length automatically up to 190m at 3G-SDI. Cable length will be shown as 'SHORT', 'MEDIUM' and 'LONG'.

### Audio Level Meter



It is easy to check what is being played on the LCD screen. You can also check the sound through the audio level meter on the screen what is being played.

### Wall Mountable



ez-SHV+ has a wall mount option. You can alternative choose to set up at wall or not by changing side bracket.

## LUMANTEK



### Data Input

SDI Video Input: SD/HD/3G-SDI (BNC 75Ω) x1

Video Formats:

- 720x480i@59.94/60
  - 720x576i@50
  - 1280x720p@50/59.94/60
  - 1920x1080i@50/59.94/60
  - 1920x1080p@23.94/24/25/29.97/30
  - 1920x1080p@50/59.94/60
- (3G-SDI Level-B not supported)

### Data Output

SDI LOOP Output: SD/HD/3G-SDI (BNC 75Ω) x1

Audio Output: Stereo Jack x1

HDMI Video Output: SD/HD/3G (HDMI Type A) x1

Video Formats:

- 720x480i@59.94 (DIP SW : 1111)
- 720x576i@50 (DIP SW : 0111)
- 1280x720p@50 (DIP SW : 1011)
- 1280x720p@59.94 (DIP SW : 0011)
- 1280x720p@60 (DIP SW : 1101)
- 1920x1080i@50 (DIP SW : 0101)
- 1920x1080i@59.94 (DIP SW : 1001)

### Connections

Power : DC Power Input (DC Jack) x1, (Global Power Adapter)

DIP Switch : (6 Pole) x1 Video In/Out Resolution, Video Output Ratio, LCD Brightness

MODE : (Push Switch) x1 LCD ON/OFF, Menu Selection

### Display

2.7 inch TFT LCD : Input Video Display, Input SDI Eye Pattern, In/Output Video Resolution Display, Input Cable Length, Audio level meter

### Electrical

Power Input: DC +5V to +18V

Power Consumption: 3W(max.)

Operation Temperature: 0~45°C

### Physical

Dimension: 86.3x57.2x26.6 mm (include connector)

Weight: 0.3 kg (0.66 lbs)