



1 inch 20 MEGAPIXEL Machine Vision Lens

MPZ Series

- Compact & Light Weight
- Shorter Working Distance
- Floating Design
- Nominal Distortion Design
- Ensure Corner Brightness
- Vibration Resistance : 5G



IMX183
1" 2.4 μ m

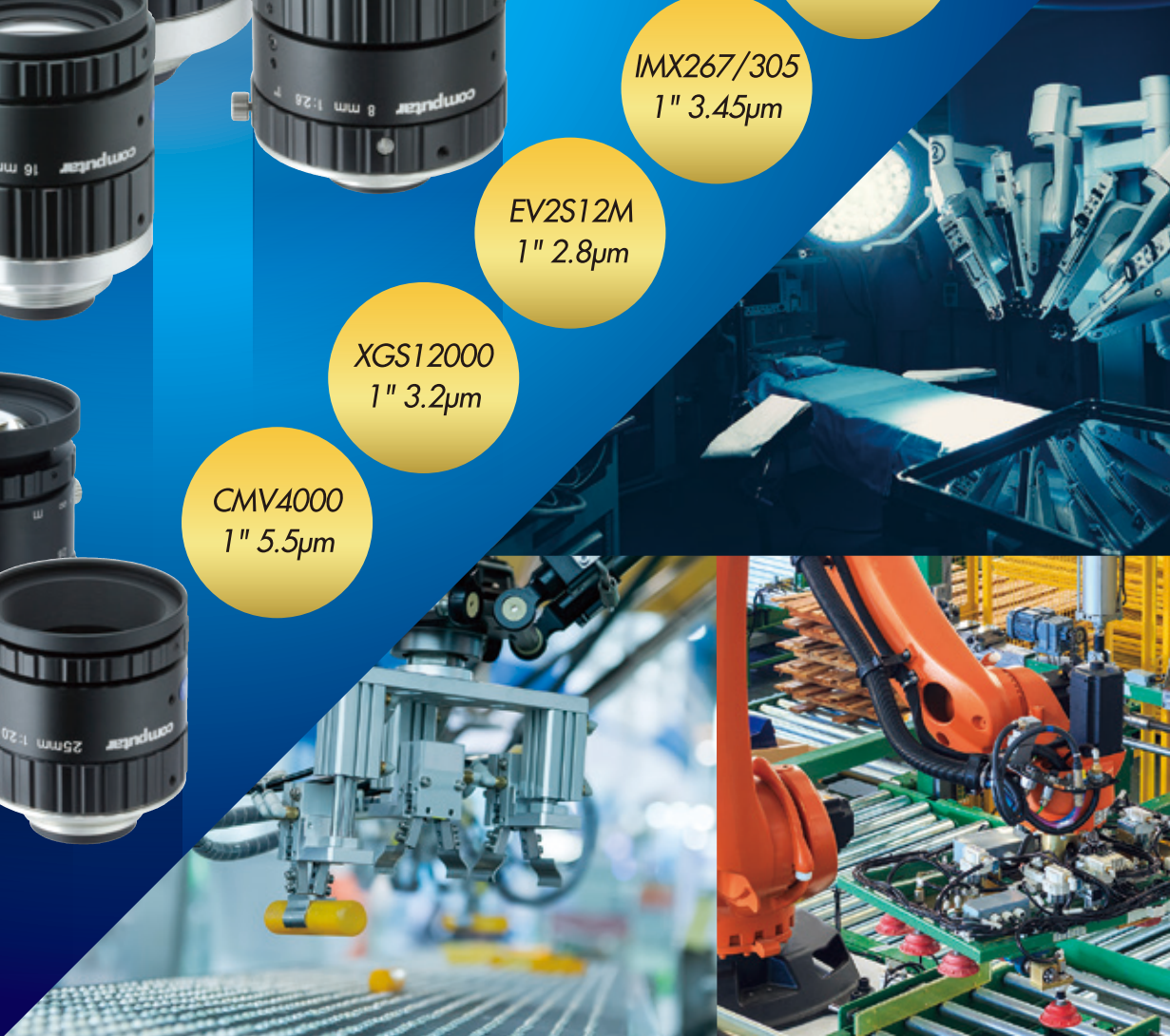
IMX255
1" 3.45 μ m

IMX267/305
1" 3.45 μ m

EV2S12M
1" 2.8 μ m

XGS12000
1" 3.2 μ m

CMV4000
1" 5.5 μ m



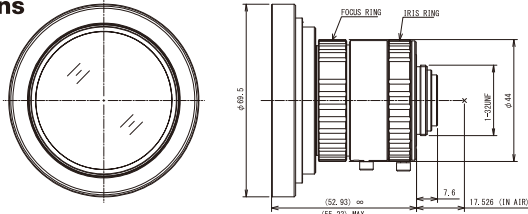
1 inch 20 MEGAPIXEL Machine Vision Lens MPZ Series



V0826-MPZ

Focal Length		8mm		Distortion		1 Type	-0.8%
Max. Aperture Ratio		1:2.6		2/3 Type		-2.1%	
Max. Image Format		12.8mm x 9.6mm(φ16mm)		1/1.8 Type		-1.9%	
Operation Range		Iris	F2.6 - F16.0	Filter Size		M82 P=0.75mm ※	
Focus		0.1m - Inf.		Weight		203.1g	
Angle of View	D	1 Type	88.8°	2/3 Type	1/1.8 Type	68.6°	58.2°
	H		76.9°			57.1°	47.8°
	V		61.5°			44.2°	36.6°
Operation Temperature		-10°C - +50°C		※ When using ZM-0810 (Sold separately)			

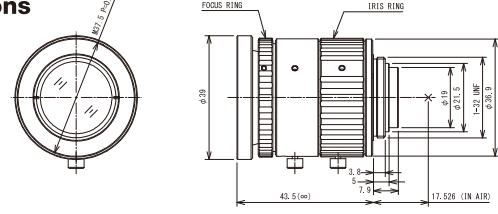
Dimensions



V1226-MPZ

Focal Length		12mm		Distortion		1 Type	0.0%*
Max. Aperture Ratio		1:2.6		2/3 Type		-1.1%	
Max. Image Format		12.8mm x 9.6mm(φ16mm)		1/1.8 Type		-1.0%	
Operation Range		Iris	F2.6 - F16.0	Filter Size		M37.5 P=0.5mm	
Focus		0.1m - Inf.		Weight		98.4g	
Angle of View	D	1 Type	67.4°	2/3 Type	1/1.8 Type	49.9°	41.5°
	H		56.7°			40.7°	33.7°
	V		44.1°			31.0°	25.5°
Operation Temperature		-10°C - +50°C					

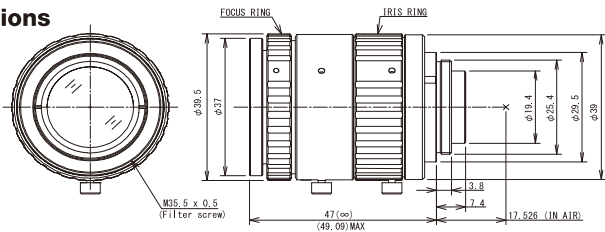
Dimensions



V1624-MPZ

Focal Length		16mm		Distortion		1 Type	0.0%*
Max. Aperture Ratio		1:2.4		2/3 Type		-0.4%	
Max. Image Format		12.8mm x 9.6mm(φ16mm)		1/1.8 Type		-0.4%	
Operation Range		Iris	F2.4 - F16.0	Filter Size		M35.5 P=0.5mm	
Focus		0.1m - Inf.		Weight		108.1g	
Angle of View	D	1 Type	53.2°	2/3 Type	1/1.8 Type	38.1°	31.6°
	H		43.8°			30.9°	25.5°
	V		33.6°			23.4°	19.2°
Operation Temperature		-10°C - +50°C					

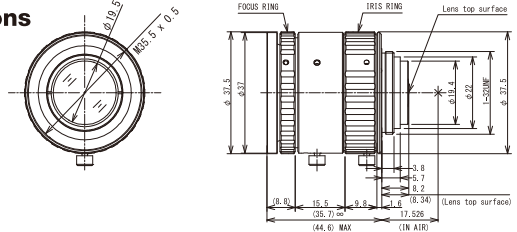
Dimensions



V2520-MPZ

Focal Length		25mm		Distortion		1 Type	0.0%*
Max. Aperture Ratio		1:2.0		2/3 Type		0.0%*	
Max. Image Format		12.8mm x 9.6mm(φ16mm)		1/1.8 Type		0.0%*	
Operation Range		Iris	F2.0 - F16.0	Filter Size		M35.5 P=0.5mm	
Focus		0.15m - Inf.		Weight		73.1g	
Angle of View	D	1 Type	35.5°	2/3 Type	1/1.8 Type	24.9°	20.5°
	H		28.8°			20.0°	16.4°
	V		21.8°			15.1°	12.4°
Operation Temperature		-10°C - +50°C					

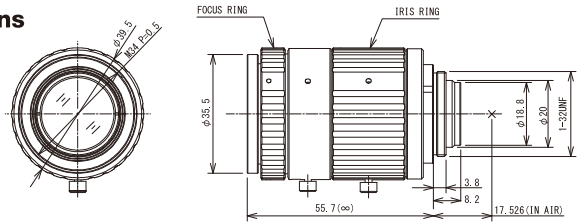
Dimensions



V3522-MPZ

Focal Length		35mm		Distortion		1 Type	0.0%*
Max. Aperture Ratio		1:2.2		2/3 Type		0.0%*	
Max. Image Format		12.8mm x 9.6mm(φ16mm)		1/1.8 Type		0.0%*	
Operation Range		Iris	F2.2 - F16.0	Filter Size		M34 P=0.5mm	
Focus		0.2m - Inf.		Weight		118.2g	
Angle of View	D	1 Type	25.8°	2/3 Type	1/1.8 Type	17.9°	14.7°
	H		20.8°			14.4°	11.8°
	V		15.7°			10.8°	8.9°
Operation Temperature		-10°C - +50°C					

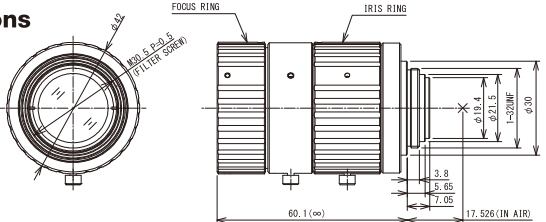
Dimensions



V5024-MPZ

Focal Length		50mm		Distortion		1 Type	0.0%*
Max. Aperture Ratio		1:2.4		2/3 Type		0.0%*	
Max. Image Format		12.8mm x 9.6mm(φ16mm)		1/1.8 Type		0.0%*	
Operation Range		Iris	F2.4 - F16.0	Filter Size		M30.5 P=0.5mm	
Focus		0.2m - Inf.		Weight		138.5g	
Angle of View	D	1 Type	18.2°	2/3 Type	1/1.8 Type	12.6°	10.3°
	H		14.6°			10.1°	8.3°
	V		11.0°			7.6°	6.2°
Operation Temperature		-10°C - +50°C					

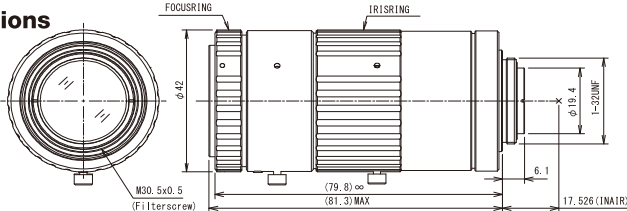
Dimensions



V7531-MPZ

Focal Length		75mm		Distortion		1 Type	0.0%*
Max. Aperture Ratio		1:3.1		2/3 Type		0.0%*	
Max. Image Format		12.8mm x 9.6mm(φ16mm)		1/1.8 Type		0.0%*	
Operation Range		Iris	F3.1 - F16.0	Filter Size		M30.5 P=0.5mm	
Focus		0.25m - Inf.		Weight		176.1g	
Angle of View	D	1 Type	12.2°	2/3 Type	1/1.8 Type	8.4°	6.9°
	H		9.8°			6.7°	5.5°
	V		7.3°			5.0°	4.1°
Operation Temperature		-10°C - +50°C					

Dimensions



HeadQuarters

CBC Co.,Ltd.

2-15-13, Tsukishima, Chuo-ku, Tokyo, 104-0052, Japan
TEL:+81(0)3 3536 4766 FAX:+81(0)3 3536 4172

www.computar-global.com