

TAMRON

Compact and Lightweight Camera Module MP3010M-EV

Overview

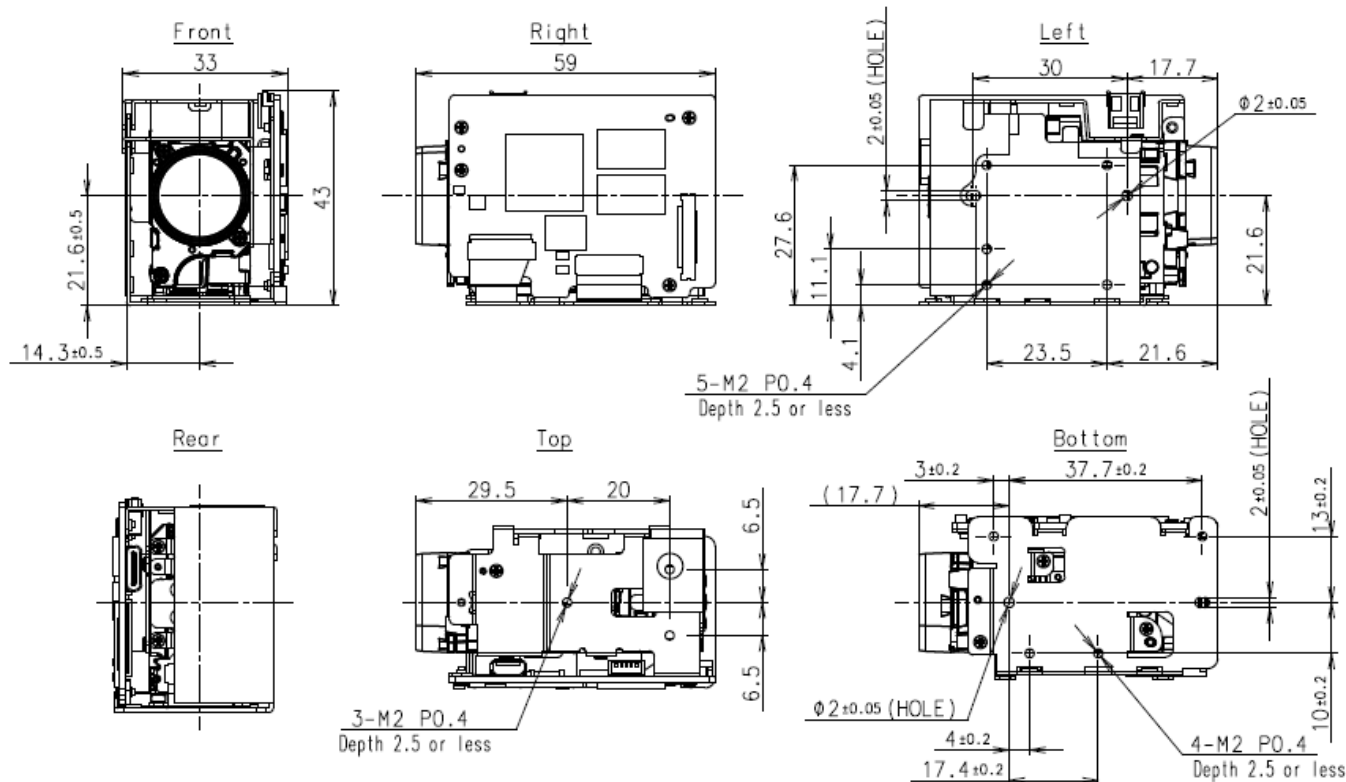
- Full upgrading compatibility with the previous models of MP1010/MP1110 series
- Equipped with industry-leading compact 10x zoom lens
- New functions for the various applications (High sensitivity, Day/Night function, Multi-interface, etc.)

Specifications

■ Camera			
Image sensor	Sony's CMOS image sensor with STARVIS™ technology <small>STARVIS is trademark of Sony Group corporation or its affiliates.</small>	■ Functions	
Pixel output (H x V)	1920 x 1080, 1280 x 720	EIS (Electronic Image Stabilization)	OFF/ON
Signal system (HD)	1080p/60, 1080p/59.94, 1080p/50, 1080p/30, 1080p/29.97, 1080p/25, 720p/60, 720p/59.94, 720p/50, 720p/30, 720p/29.97, 720p/25	Wide-dynamic range (Gamma)	OFF/ON
Signal system (SD)	NTSC/PAL	Day/Night (ICR)	OFF/ON/AUTO
Minimum illumination	0.1 lx (1/30sec, F/1.8, 50%, Color, Typical) 0.025 lx (1/30sec, F/1.8, 50%, B&W, Typical)	Defog	OFF/ON (Level : 1~3)
Recommended illumination	100lx ~ 100,000lx	Noise reduction (3D + 2D)	OFF/ON (Level : 1~5)
S/N	More than 50dB	Privacy zone mask	Up to 8 places
Gain	Auto/Manual	Slow shutter	OFF/ON (Max 1sec)
Shutter speed	1/1 ~ 1/10,000 sec	Picture effects (Black White)	OFF/ON
Sync system	Internal	Picture freeze	OFF/ON
Exposure compensation	-12dB ~ +12dB (Total 13 steps)	Electronic Flip (E-Flip)	OFF/ON
Backlight compensation	ON/OFF	Mirror image	OFF/ON
Gamma	standard/straight/narrow/wide	Temperature readout	available
Aperture control	16 steps	Title display	OFF/ON (20 characters/line, max. 12 lines)
White balance	ATW1(Narrow), ATW2(Wide), INDOOR, OUTDOOR, One push, Manual		
AE (Auto exposure mode)	Auto, Manual, Priority mode (shutter/iris)	■ General	
Lens (wide~tele)	10x optical zoom f = 3.3~33.0mm F/1.8~3.4	Power requirement	DC 8~12±10%
Zoom mode	Standard/Variable/Direct	Power consumption	Approx.2.5W (Approx.4.4W in the zoom and focus operation)
Zoom movement speed (wide to tele)	1.7 sec (Focus Tracking ON)	Recommended temperature	0~+40°C
Digital Zoom	Up to 16x	Operating temperature	-5~+60°C
Focusing system	Auto, Manual, One push, AF sensitivity	Storage temperature	-40~+60°C
Horizontal viewing angle (wide to tele)	59.2° ~ 6.7° (※ except when EIS is operated)	Operating humidity	20%~80% (no condensation)
Minimum object distance (wide to tele)	Visible light : 10mm(wide)~800mm(tele) 850nm : 10mm(wide)~1200mm(tele)	Storage humidity	20%~90% (no condensation)
		Dimensions (W x H x D)	33 x 43 x 59 mm
		Wight	Approx.70g
■ Interface			
Video output (HD)	LVDS : Digital Y/Pb/Pr 4:2:2 HDMI : Digital Y/Pb/Pr 4:2:2(HDMI Type D) <small>※The Adopted Trademarks HDMI, HDMI High-Definition Multimedia Interface, and the HDMI Logo are trademarks or registered trademarks of HDMI Licensing Administrator, Inc. in the United States and other countries.</small>		
Video output (SD)	CVBS 1.0V(p-p,75Ω)		
Camera control interface	VISCA protocol <small>*VISCA is a registered trademark of SONY Corporation</small>		

Dimensions

unit : mm



Model	Tamron Co., Ltd	Category	Issue	No
MP3010M-EV		camera module	2022/8/1	1/1