



DigiLink Media Transport Platform

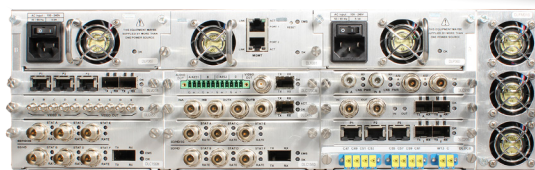


DigiLink is a state-of-the-art modular platform leveraging Artel's 30 years of carrier-class video transport experience. DigiLink is specifically designed to meet the need for a low cost, rugged, and simplified design for transporting broadcast-quality video and Ethernet across IP networks, direct fiber, and optical backbones.

The most deployed solution for the North American metro-regional video-over-fiber market, DigiLink is used by all major broadcasters and networks for their critical contribution feeds for major sporting, news, and live events. DigiLink is the industry's gold standard for simplicity of design, legendary reliability, and cost-effectiveness. A tightly integrated platform, it also offers uncompressed video-over-IP transport and integrated video and Ethernet switching.

Designed specifically to meet the unique requirements of broadcast video transport, DigiLink features multi-purpose, single-piece function modules, multiple ruggedized chassis, external optics in all standard wavelengths, and front panel accessible status LEDs and video monitor ports for each module. NEBS Level 3 Certification across the entire platform ensures it is the most rugged and dependable video transport platform ever developed.

DL4360x Chassis, 3RU, 12 Slot Active Routing



OVERVIEW

Applications

- Video-Over-IP
- Video-Over-Fiber
- Video-Over-Optical Networks
- Video Routing
- Ethernet Transport
- Ethernet Switching
- L-Band Demodulator
- Optical Multiplexing
- Audio Embedding and Transport
- Circuit Verification

Formats supported

- 2.967 Gb/s 3G-SDI (SMPTE 424M)
- 1.485 Gb/s HD-SDI (SMPTE 292M)
 - SD-SDI (SMPTE 259M-C, ITU 656)
 - SDTI (SMPTE 305M)
- DVB-ASI
- Other 270 Mb/s video services
- Composite analog video & audio (NTSC, PAL)
- 19.39 Mb/s ATSC (SMPTE 310M)
- 10/100/1000/10000 Ethernet

Chassis features

- Simplified deployment and configuration
- 1, 4, and 12 slot options
- Unlimited, non-spaced installation
- Dual hot-swappable AC or DC power
- Internal video and Ethernet interconnect
- On-board SNMPv2 and HTTP element management system (EMS)

Module features

- Single-piece, hot-swappable
- Front panel status LEDs and video monitoring
- Common set of external removable optics
- Available WDM, CWDM, and DWDM channels
- Configured with on-board switches or DigiLink Manager
- Multi-purpose, multi-format

Certifications

- NEBS Level 3
- GR-63
- GR-1089
- CSA 60950
- EN60950
- FCC Part 15 (Class A)
- CISPR 22

DigiLink offers a chassis for any deployment or application. Function modules are deployable in any chassis creating a unified and integrated solution for all your video transport needs.

Standard Features

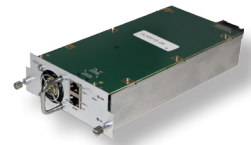
- Space efficient: 4 function modules per RU, 10.5" deep
- Stackable non-spaced deployment. Side and front-to-rear cooling.
- Low power
- Quiet operation with variable fans
- Rugged and reliable, Certified NEBS Level 3 (DL4360x, DL4000)
- Integrated SNMP or HTTP monitoring and management
- Internal video and Ethernet communication eliminates external cross connect cabling and provides for remote routing and configuration
- Dual AC, DC, or one of each hot-swappable power supplies (DL4360x, DL4000)

DL4360x 3 RU 12 Slot with Active Routing



Features

- 3RU, 12 function module slots
- 60 x 60 video and Ethernet switching and routing
- Integrated HTTP and SNMP management



DLX001 Switching and Routing Module

DL4360x features an advanced design combining modular-based transport functionalities with internal routing capabilities for video and Ethernet traffic. By eliminating external cross connects while staying in native video or Ethernet format, the DL4360x streamlines routing and rerouting of video and Ethernet traffic, reducing operational expenses, and providing an ideal solution for remote sites where immediate and timely reconfiguration is required via EMS or NMS.

DL4000 1 RU 4 Slot



Features

- 1RU, 4 function module slots
- Internal video and Ethernet switching and routing
- HTTP and SNMP management

At 1 RU and capable of holding up to 4 function modules, the DL4000 is ideal for smaller deployments or portable applications. Using a passive backplane design, the DL4000 is capable of internally routing video and Ethernet signals between modules.

DL4100 Single Slot



The DL4100 is an inexpensive, compact chassis holding one single slot DigiLink function module. Ideal for deployments in remote locations. External AC power supply.

Sales



T: +1 978-263-5775
sales@artel.com
customercare@artel.com
www.artel.com



DIGILINK CHASSIS SPECIFICATIONS

Chassis Model	DL4360x	DL4000	DL4100
PART #	390-009100-00	390-008000-00	390-001000-00
Number of function module slots	12	4	1
Power supplies	1 or 2 AC, DC or 1 of each (Hot swappable)	1 or 2 AC, DC or 1 of each (Hot swappable)	1 AC external
Cooling	Active fans 3 for function modules 1 per power supply 1 for active switch module	Active fan 1 per power supply	Convection
Chassis dimensions (h, w, d)	5.25" x 17.0" x 10.5"	1.75" x 17.0" x 10.5"	.83" x 5.88" x 10.5"
Chassis wt. (Fully populated)	< 20 lbs	< 10 lbs	< 3 lbs
Operating temperature	0 to 50° C	0 to 50° C	0 to 40° C
Relative humidity		10 to 95% (non-condensing)	
Ambient storage		-40 to 80° C	
Module-to-module internal connection	Yes, full 60x60 non-blocking. Requires optional switch module.	Yes	No
Remote monitoring and management via DL-Manager	Yes	Yes	No
Regulatory Conformance			
NEBS Level 3 Certification	Yes	Yes	No
CSA 60950, EN60950, EN55022, FCC Part 15 (Class A), CISPR 22	Yes	Yes	Yes

AC POWER SUPPLY SPECIFICATIONS

Chassis	DL4360x	DL4000	DL4100
MODEL	DLP360	DLP001A	DLPE001
PART #	390-009102-00	390-008002-03	390-001002-00
Input voltage		90 to 254 VAC at 50 or 60 Hz	
Power consumption (max)	250 Watts	100 Watts (per chassis)	15 Watts
Current (max)	10 amps	1.8 Amps	.25 Amps
BTU/hr (max)	853	340	55

DC POWER SUPPLY SPECIFICATIONS

Chassis	DL4360x	DL4000
MODEL	DLP361	DLP002A
PART #	390-009105-00	390-008005-03
Input voltage	-40 to -70 VDC	-40 to -70 VDC
Power consumption (Max)	250 watts	100 watts (per chassis)
Current (Max)	5 amps	3.6 Amps
BTU/hr (Max)	853	340 (per chassis)

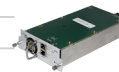
DL4360x Fan Tray and Controller*

MODEL	DLFM010
PART #	390-009101-00
Power consumption	< 30 Watts
Cooling	Active 3 fans



DL4360x Switching and Routing Module

Model	DLX001
Part #	390-009109-00
Power consumption	< 18 Watts
Cooling	Active 1 fan





■ WHY ARTEL

At Artel, we recognize the industry changes and leverage our 30 years of video transport experience to develop DigiLink, a reliable and simple-to-deploy media transport solution designed to take advantage of enhanced technologies. The result is a flexible, space efficient, low power solution with thousands of successful deployments worldwide and an unparalleled reputation for reliability. Also, DigiLink is the easiest to deploy and manage platform on the market making it an ideal solution for government, higher education, houses of worship, sports, and other applications where reliable broadcast-quality media transport is required.

DIGILINK OPTIONS		PAGE
Chassis		
DL4360x	3RU, 12 Slot Chassis with Active Routing	4
DL4000	1RU, 4 Slot Chassis	4
DL4100	Single Slot Chassis	4
Routing and I/O		
DLX001	Switch and Routing	4
DLC055	10 Port Video I/O	10
DLC105	10 Port SFP based Media Access and Transport	14
Video over Fiber		
DLC103A	3G Multi-Rate Digital Video Optical Transmitter/Receiver/Transceiver/Repeater	12
DLC105	10 Port SFP based Media Access and Transport	14
DLC150E	SDI/SDTI 4 Channel Analog/Digital AES Audio Embed and Optical Transmitter	16
DLC156M/D	Six Channel TDM Multiplexers for 3G, HD, SDI, and ASI	18
DLC170AD	Composite Video (NTSC/PAL) and Analog Audio to SDI Conversion with Optical Transmitter	20
DLC170DA	SDI to Composite Video (NTSC/PAL) Analog Audio Conversion with Optical Receiver/Repeater	22
DLC274M/D	270 Mb/s Digital Video 4-to-1 TDM Multiplexer with Optical Transmitter/Receiver/Repeater	26
DLC300	3G-SDI Multi-Rate Digital Video Optical Transmitter/Receiver/Repeater	28
Video over IP		
DLC450	HD, SD, ASI, and Gig-E Transport over 10 Gig Ethernet Gateway	32
DLC410	DVB-ASI and SD-SDI Video-Over-IP Gateway	30
Ethernet Transport		
DLC205	Gig-E Aggregator and Optical Transceiver	24
DLM205	Gig-E Aggregator and Optical Transceiver with On-Board Chassis Management	38
L-Band Demodulation, Satellite Scanning, Carrier ID		
DLC510	Dual-Port L-Band Demodulator and Satellite Scanner	34
Video Over Optical Networks		
DLC156M/D	Six Channel TDM Multiplexers for 3G, HD, SDI, and ASI	18
DLC274M/D	270 Mb/s Digital Video 4-to-1 TDM Multiplexer with Optical Transmitter/Receiver/Repeater	22
DLC300	3G-SDI Multi-Rate Digital Video Optical Transmitter/Receiver/Repeater	28
Optical Multiplexing		
	DWDM, CWDM, and WDM Optical Multiplexers	42
Audio Embedding and Transport		
DLC150E	SDI/SDTI 4 Channel Analog/Digital AES Audio Embed and Optical Transmitter	18
DLC170AD	Composite Video (NTSC/PAL) Analog Audio to SDI Conversion with Optical Transmitter	20
DLC170DA	SDI to Composite Video (NTSC/PAL) Analog Audio Conversion with Optical Receiver/Repeater	22
Signal Generators, Video Circuit Verification, and Multiviewers		
DLT710	Multi-Format Digital Video Generator and Tester	40
DLC910	Quad SD-HD-3G Multiviewer	36



UPDATED 11/04/2016
All specifications subject to change without notice. ©2016



Sales



T: +1 978-263-5775
sales@artel.com
customercare@artel.com
www.artel.com