

**LILLIPUT®**

Rack mount monitor for broadcast & live streaming.  
Application for cabinets & broadcast trucks.

1920×1080

HDMI2.0 / SDI

Remote Control

HDR / 3D-LUT

17.3"

# 1RU RACK MOUNT MONITOR



**RM-1731S**  
HDMI2.0 + 3G-SDI

**RM-1731**  
HDMI2.0

# 1920×1080

## SUPPORT HDR

Allowing lighter and darker details to be displayed more clearly.  
Support ST2084 300 / ST2084 1000 / ST2084 10000 / HLG.

## SUPPORT 3D-LUT

Built-in 3D-LUT, featuring 17 default logs and 6 user logs.



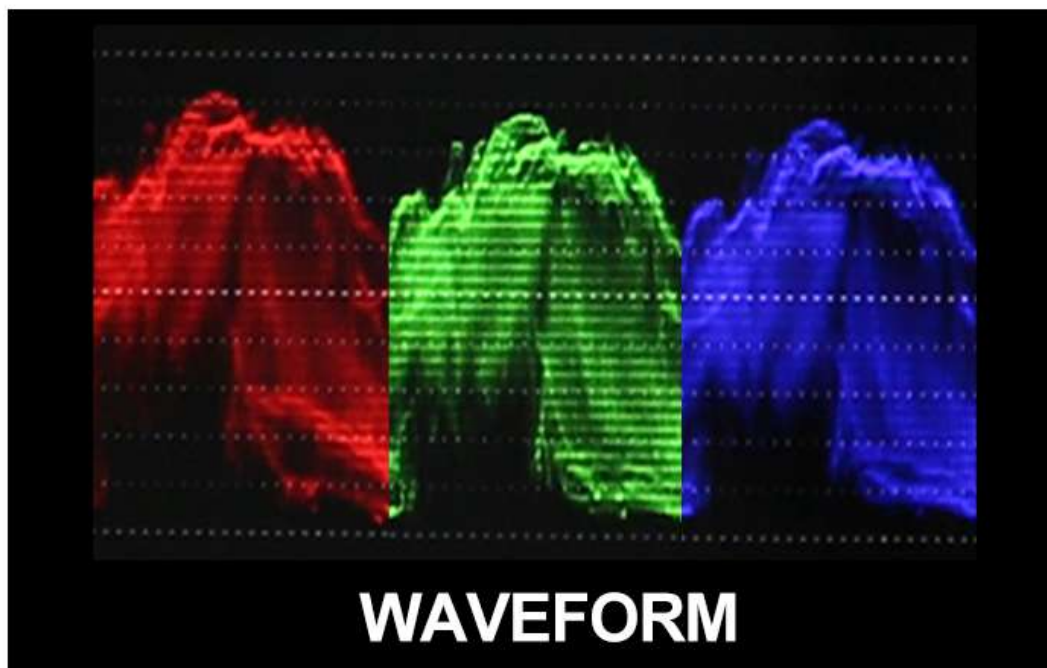


# LAN CONNECTION

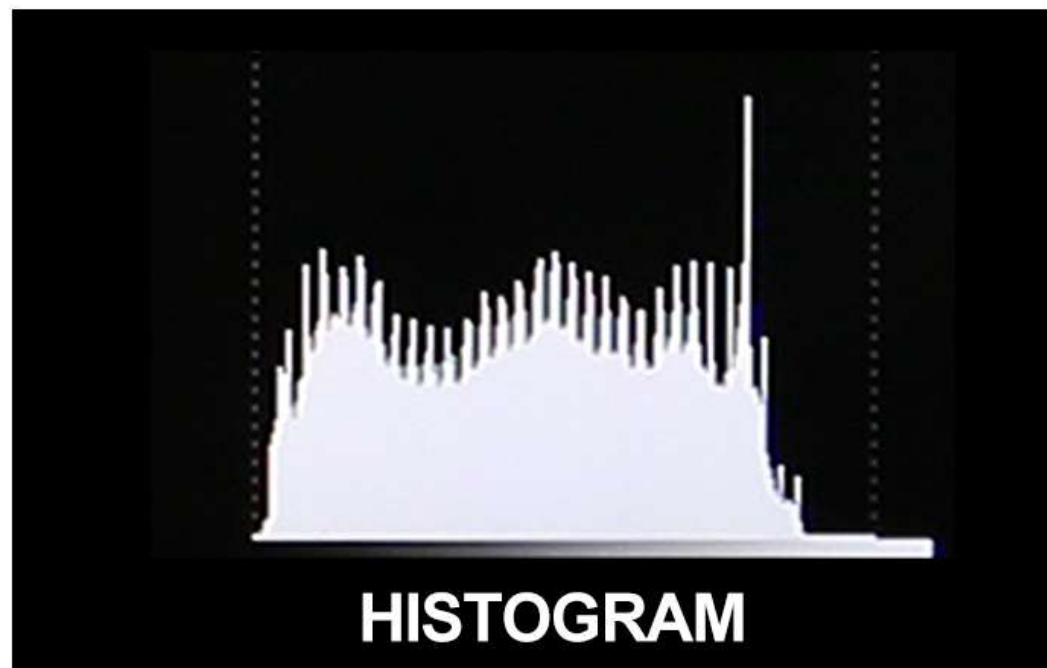
Select LAN port to connect to the PC, allowing the application to identify the monitor before control.

# REMOTE CONTROL

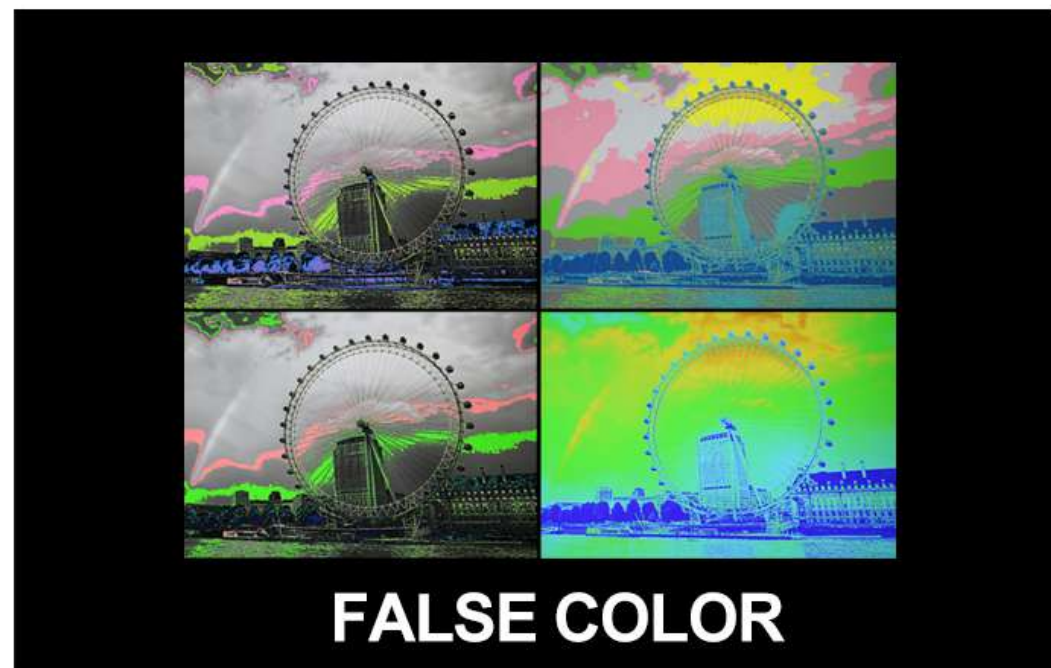
Connect your computer to control the monitor via applications. Such as signal sources, functions, and audio...



WAVEFORM



HISTOGRAM



FALSE COLOR



3D-LUT



HDR



Time Code (SDI Only)



Remote



Vector scope



Waveform



Level meter



Histogram



Exposure



Peaking



False color



Check field



Color bar



Pixel zoom



Pix to pix



Marker



Freeze



H/V Delay



Image Flip

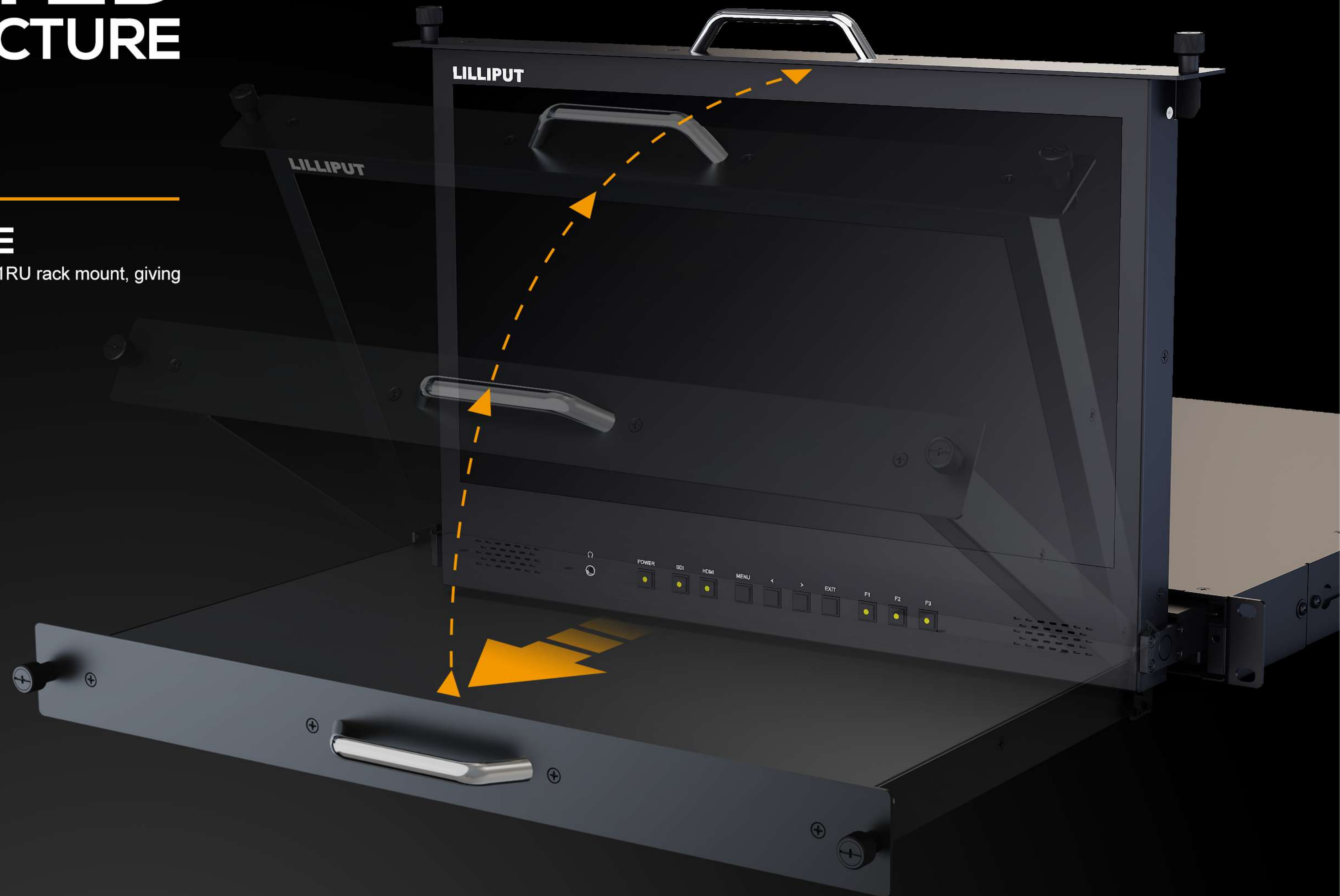
# PATENTED DESIGN STRUCTURE

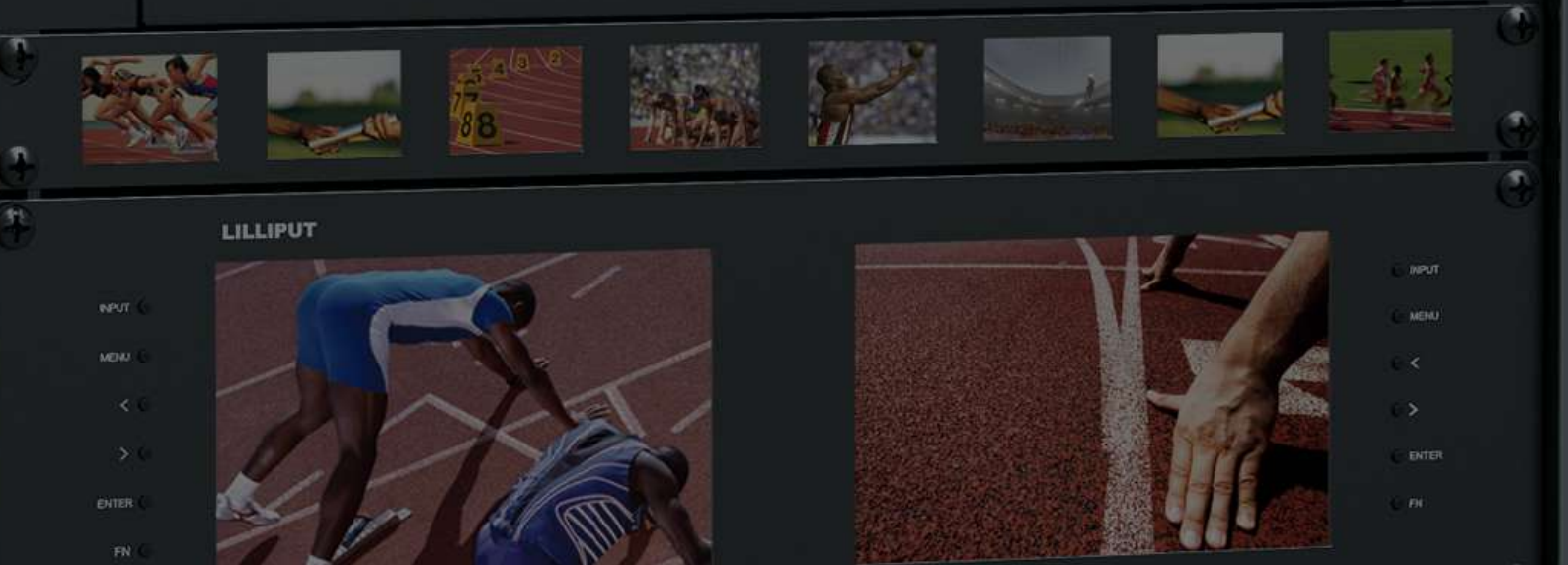
## PATENT NO.

201610862204.5 201621090715.1

## SLIM & SAVING SPACE

Clever design of folding and storage, using only 1RU rack mount, giving consideration to beauty and compactness.





# 1RU

## RACK MOUNT INTELLIGENT SDI MONITORING

It has a various of mounting methods for broadcast, on-site monitoring and live broadcast truck, etc. 1RU rack mount design for a customized monitoring solution, which not only save the space of rack greatly with 17.3 inch monitor, but also view from different angles when monitoring.

# HDMI 2.0

## 2160 60HZ VIDEO SIGNAL

Equiped with HDMI 2.0 input and loop output interfaces,  
which support up to 2160p 60Hz video signal.



G	R	Y	GND
1	2	3	4

DC IN

TALLY

OUT SDI IN

OUT HDMI IN

USB

LAN

DC IN

TALLY

3G-SDI (optional)  
input and loop output

HDMI2.0  
input and loop output

USB

LAN

INTERFACE PROTECTOR

# SPECIFICATIONS

<b>DISPLAY</b>	Panel	17.3" IPS
	Physical Resolution	1920×1080
	Aspect Ratio	16:9
	Brightness	300 nits
	Contrast	800:1
	Viewing Angle	170°/ 170°(H/V)
	HDR Supported	HLG; ST2084 300/1000/10000
<b>INPUT</b>	HDMI	1 (HDMI 2.0)
	3G-SDI	1 (Optional)
<b>OUTPUT</b>	HDMI	1 (HDMI 2.0)
	3G-SDI	1 (Optional)
<b>SUPPORTED FORMATS</b>	HDMI	2160p 24/25/30/50/60, 1080p 24/25/30/50/60, 1080i 50/60, 720p 50/60...
	3G-SDI	1080p 24/25/30/50/60, 1080pSF 24/25/30, 1080i 50/60, 720p 50/60...
<b>AUDIO IN/OUT</b>	Speaker	2
	HDMI	8ch 24-bit
	Ear Jack	3.5mm - 2ch 48kHz 24-bit
<b>POWER</b>	Input Voltage	DC 10-24V
	Power Consumption	≤14W (12V)
<b>ENVIRONMENT</b>	Operating Temperature	0°C~50°C
	Storage Temperature	-20°C~60°C
<b>DIMENSION</b>	Dimension(LWD)	482.5mm × 44mm × 507.5mm
	Weight	8.9kg



HDMI2.0 + 3G-SDI



HDMI2.0



# ACCESSORIES

## STANDARD



12V 2A DC Power Adapter



Tally Connector



E-User Manual

