

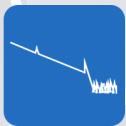
MT-6500 series



New Generation

Multifunction **CCTV Tester** combined with **OTDR**

4K IP H.265 camera testing



OTDR



Max 150KM



Optical signal detection



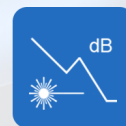
Laser Source



OPM



VFL



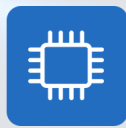
Optical loss test



WIFI



4K H.265



4 Core CPU



LPDDR4



UTP cable test



Digital cable tracer



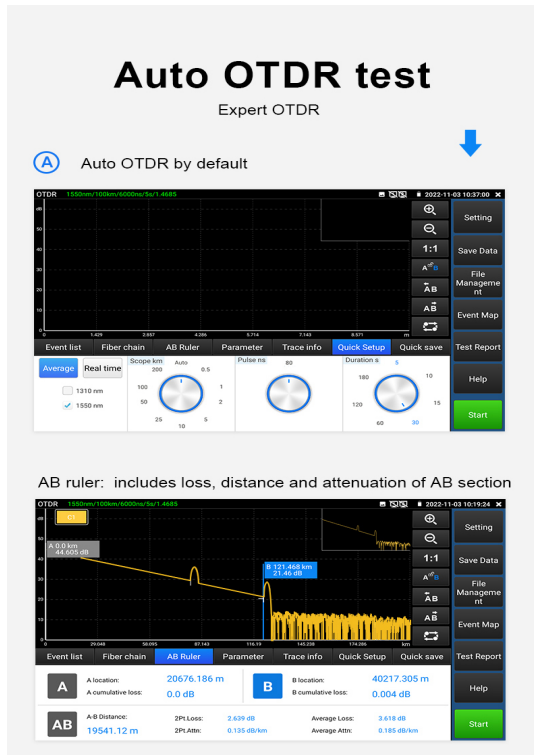
PoE power



Network Tool



RJ45 TDR length



- ◆ Multi-functional OTDR and measuring instrument
- ◆ Stable laser source, optical power meter and visual fault locator
- ◆ 5.4 inch IPS touch screen, 1920*1152 resolution
- ◆ 4K H.265 & H.264 IP camera tester
- ◆ 4 core CPU, support online update and install applications
- ◆ Internal storage and external TF card
- ◆ Report saved as EXCEL, PDF, or screenshots format etc,
- ◆ Support snap shot screen
- ◆ Support remote control
- ◆ 8MP TVI CVI AHD camera testing * **Optional**
- ◆ HDMI input/VGA input * **Optional**
- ◆ PoE power output and PoE voltage and power measurement
- ◆ DC12V2A/12V 3A / 5V 2A power output
- ◆ Gigabit network port, support Ping and scan IP address etc
- ◆ Support WIFI
- ◆ RJ45 TDR cable shorts and opens test
- ◆ Improvement cable tester, UTP cable etc continuity test

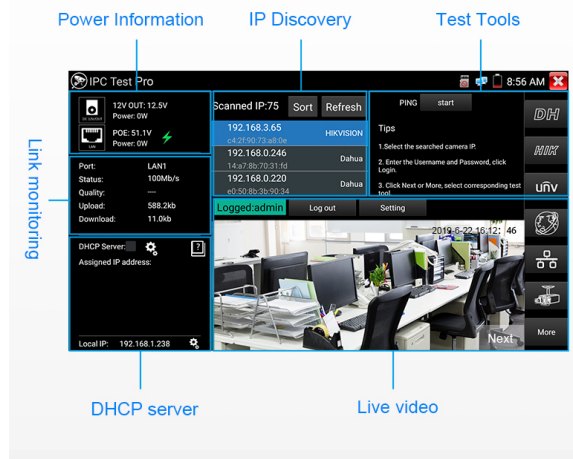
Application

Multi-function MT-6500 OTDR series is an essential tool for fiber length, network and camera testing. OTDR displays the power of the returned signal related to distance. The information can be used to confirm the transmission quality of a fiber optic link. It is widely used in the maintenance, construction and monitoring of cable line. It can measure the optical fiber length, transmission attenuation of optical fiber, attenuation of splice, and failure location, etc. as well, built in camera tester for maintenance and installation of IP analog, HD coaxial cameras as well as other security equipment. If taking the all in one OTDR, it will make working conditions safer and increasing productivity.

- CCTV system installation and maintenance
- Network cabling project installation and maintenance
- Dome camera, TVI CVI AHD 8K H.265 IP camera testing
- Video transmission channel testing
- PTZ controller
- Fiber length testing and Event Map etc

IPC Test Pro

Integrated IP camera test, PoE and camera test tool function in one app, can view the network information, the power and voltage of PoE and DC 12V, also can go to ONVIF function and test tool functions.



Features

OTDR

- 5.4 inch IPS touch screen, 1920*1152 resolutions
- 1310/1550/1610 wavelength **optional**, 26/28/30/32/34dB Dynamic range **optional**, max test range **150KM***
- Stable laser source, support CW/270/330/1000/2000Hz
- Test fiber's length, loss, attenuation parameters and event map, locate connection point/ fusion point
- Automatic analysis of various linkers/fusion points, easy analyze of various events
- Save and view the testing curves, support zoom and move curves, view details.
- Support saving curves number ≥ 30000 pcs
- Support create testing report, including curve trajectory graphs, parameter settings, fiber event information, and fiber link information
- Report saved as EXCEL, PDF, or screenshots format etc
- Loss test, detect the optical or optical components loss value

Camera test:

- 5.4 inch IPS touch screen, **1920*1152 resolution**
- 4K H.265 video display via mainstream
- TVI 4.0/ CVI 5.0/ AHD 4.0 camera test, UTC control & call OSD menu **(Only for Model 6510) ***
- AXIS, Hikvision, dahua camera testing, enter ONVIF app, input username and password to test
- DC12V/3A power output, support temporarily supply power for the camera
- 48V PoE power output
- Chrome browser, test and set Axis camera
- Support CVI 5.0 Audio testing **(Only for model MT-6510) ***
- Rapid video, just by one key to detect all network cameras and auto display
- Built in Wi-Fi, display image from the wireless camera, create WIFI hotspot
- 4K HDMI input Optional **(Only for model MT-6510) ***
- 2K 60F VGA input Optional **(Only for model MT-6510) ***

Cable test:

- Improvement cable tester, UTP cable, telephone cable etc sequence and continuity test, save testing report. Support detect the near-end, mid-end and far-end fault point of the RJ45 cable plug
- RJ45 cable TDR test, test cable pair status, length, attenuation, reflectivity, impedance, skew etc, max test 180M
- Cable tracer, search BNC cable, network cable and telephone cable from the mess cables

Other functions

- New Power management file, Output power and input power management interface, to quickly check POE48V, 24V2A, 12V3A power and voltage
- POE & power information, DC12V& PoE power and voltage output /input measurement
- Tester Play: Tester, android version mobile phone and PC display at the same time
- Shortcut button, drop-down menu, can select Poe power, IP setting, CVBS, LAN info, HDMI IN etc
- Advanced Network Tool, Scan IP, Route tracking, Socket debugging, ping packet test, DHCP, PPPOE, LLDP testing etc
- 7.4V 5200mA Li-ion Battery, 2.5 hours charging, normal working time lasts 11 hours

Specification		
Size & Display	5.4 inch IPS touch screen ,1920*1152 resolution	
Network Port	One 1000M LAN port, 10/100/1000M auto adapt	
WIFI	Built in 2.4G WIFI, speeds150M, display wireless camera image	
H.265 mainstream test	H.265 & H .264 IP, 8K video display via mainstream	
IP camera test	Support 500 brands IP camera test	
IP discovery	Auto-scan the whole network segment IP address	
HD coaxial camera test	TVI 4.0/ CVI 5.0/ AHD 4.0 camera test, UTC control & call OSD menu (Only for model MT-6510) *	
CVBS camera test	1 channel BNC input & 1 channel BNC looped output, NTSC/PAL (Auto adapt) (Only for model MT-6510) *	
Zoom Image	4x zoom, enlarge image, screen snapshot, save, view and record and playback	
RJ45 cable TDR test	Test cable pair status, length, attenuation, reflectivity, and impedance, skew etc. measurement range 600M.	
HDMI input	HDMI input (Only for model MT-6510) *	
VGA input	Support 1280x1024/960/800/768/720P 60FPS, 1152x870P 60FPS, 1024x768P 60FPS, 800x600P 60FPS, 640x480P 60FPS resolution (Only for model MT-6510) *	
Power output	48V PoE/ 24V2A/ 12V 3A / 5V 2A power output	
UTP cable test	Test UTP cable connection status and display on the screen. Read the number on the screen. detect the near-end, mid-end and far-end fault point of RJ45 cable connector, also can test shield cable	
Data monitor	Captures and analyzes the command data from controlling device, also can send hexadecimal	
Network test	Trace route, Link monitor, DHCP server, port flashing, Ping test	
Digital Cable tracer	Search BNC cable, network cable and telephone cable from the mess cables. Cable tracer and UTP cable test app in the same interface, also can search shield cable	
Electroscope	Voltage range	AC12-1000V
	Frequency	50/60Hz
	Alarm type	Sounds and light double alarms
	Level	CAT.III 1000V / CAT.IV 600V;CE
PoE Voltage test	Measurement POE switch or PSE power supply voltage and cable connection status	
Visual fault locator	10mW visual fault locator with 650nm wavelength, emit red laser sources to test multi-mode and single mode fiber's bending and breakage, test range 8KM	
Optical power meter	Wavelength:1625,1550nm,1490nm,1310nm,1300nm,850nm, measurement range , -70 ~ +10 dBm, for optical power testing and Fiber link loss relative measurement	
Power		
External power supply	DC 12V (2A)	
Battery	Built-in 7.4V Lithium ion battery, 5200mAh	
Rechargeable	After charging 2.5 hours, normal working time 11 hours	
Parameter		
Operation setting	OSD menu, select your desired language: English, Portuguese, Korean, Russian, Italian, French, Polish, Spanish, Japanese, Turkish, Deutsch, Serbian, Czech, Vietnamese etc	
Auto off	5-30 (mins)	
Working environment		
Working Temperature	-10℃---+50℃	
Working Humidity	30%-90%	
Dimension/Weight	264mm x 182mm x 43mm / 1KG	

OTDR Technical Specifications								
Wavelength (nm) (nm) Optional*	1310/1550				1610			
Dynamic range (dB) ¹ Optional*	28/26	30/28	32/30	34/34	28	30	32	34
Only support detect optical signal	Support				N/A			
Detect optical signal and testing	N/A				Support			
Pulse width (ns)(ns)	5, 10, 20, 30, 50, 80, 160, 300, 500, 800, 1000, 2000, 4000, 6000, 10000, 20000							
Measurement range	≤150 Km							
Event blind zone (m) ²	≤2m							
Attenuation blind zone (m) ³	≤10m							
Linearity dB/dB)	±0.05 dB/ dB							
Loss threshold (dB)	0.05							
Loss resolution ratio (dB)	0.01							
Minimum distance resolution	0.05							
Sampling point(K)	32-128							
Distance uncertainty (m)	±(1 m + 5×10 ⁻⁵ × distance + sampling interval)							
Distance scope (km)	0.5、 1、 2、 5、 10、 25、 50、 100、 200							
Typical real-time refreshing duration	1s							
Measurement duration	5sec, 10sec, 15sec, 30sec, 1min, 2min, and 3min are selectable							
File format	SOR standard format/PDF/EXCEL							
Storage	FLASH (EMMC)8G + TF card							
Interface type	FC-PC							

Remarks:

- The technical specification describes the ensured performance of the instrument when using typical PC model connector to measure, without considering the uncertainty caused by optical fiber refractivity.
- Dynamic range is the data measured under the condition of the maximum pulse width and 3 minutes of average time. Dynamic range is the data measured under the condition of 200km/20000ns/3min.
- Measuring conditions of blind zone: reflection event is within 5KM, reflection strength is 45dB. Measured by the minimum pulse width.

Comparison Table

Feature/Model	MT-6500	MT-6510	MT-6800	MT-6810
Analog camera test	x	√	x	√
IP camera testing	4K	4K	8K	8K
8MP AHD/CVI/TVI camera test	x	√	x	√
Stable laser sources	√	√	√	√
Optical power meter/ Visual fault locator	√	√	√	√
Cable tracer	√	√	√	√
VGA input	x	√	x	√
HDMI input	x	√	x	√
HDMI output	x	x	√	√
Advanced network tool	√	√	√	√
Interface type	SC-PC	SC-PC	FC/SC-PC	FC/SC-PC
LAN port	Only one LAN port	Only one LAN port	Dual LAN port	Dual LAN port
RJ45 TDR cable test	Only support cable's opens and shorts, Max 600m	Only support cable's opens and shorts, Max 600m	Support cable 's opens and shorts attenuation /reflectivity/impedance and skew, Max 180M	Support cable 's opens and shorts attenuation /reflectivity/impedance and skew, Max 180M

Note: "*" sign means functions are optional ! The data above is only for reference and any change of them will not be informed in advance. For more detailed technical inquiries, please feel free to contact us.